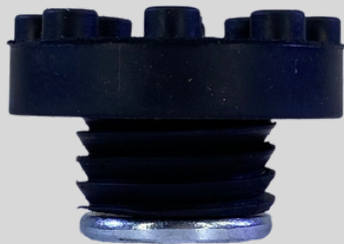




## RITZ CARLTON AT LA LIVE LOS ANGELES, CALIFORNIA

### PRODUCT

RSIC-AMI



### OVERVIEW

PAC was installed in the Ritz Carlton located in LA live in Los Angeles, California. A 54-story tower as the visual anchor for the larger six-block sports and entertainment district known as L.A. LIVE. Comprising of JW Marriott hotel and Ritz-Carlton boutique hotel. The sustainably designed tower earned LEED® Silver certification.

### PROJECT DETAILS

54-story tower, 123-key Ritz-Carlton boutique hotel, the tower's top 25 floors house Ritz-branded condominium residences,

### CONTRIBUTING COMPANIES

Developer: *Anschutz Entertainment Group*

Architect: *Gensler*

Engineer: *KS/FE*

Contractor: *Webcor Builders*

### VISIT OUR SOCIALS

