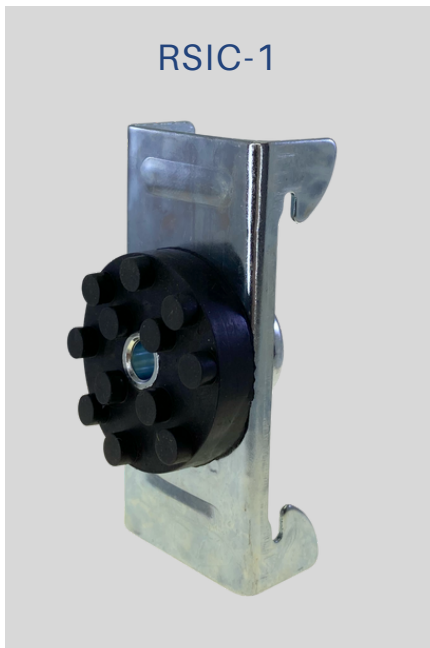




ST. ELIZABETH'S INTENSIVE CARE UNIT

BRIGHTON, MASSACHUSETTS

PRODUCT



OVERVIEW

PAC was installed in the Marriott located in LA live in Los Angeles, California. The sixth floor intensive care unit in the Connell Building at St. Elizabeth's Medical Center mirrors and continues the efficiency of the planning and workflow logic demonstrated in the ICU on the fifth floor.

PROJECT DETAILS

ICU monitoring equipment and patient lift systems were remodeling during this

CONTRIBUTING COMPANIES

Architect: *Isgenuity*

VISIT OUR SOCIALS

