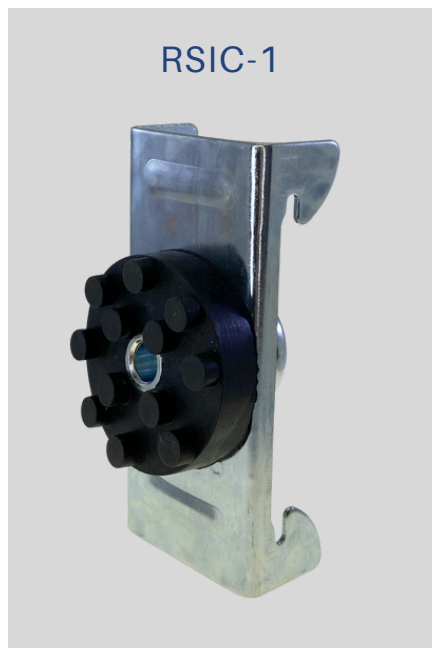




MARRIOTT AT LA LIVE LOS ANGELES, CALIFORNIA

PRODUCT



OVERVIEW

PAC was installed in the Marriott located in LA live in Los Angeles, California. A 54-story tower as the visual anchor for the larger six-block sports and entertainment district known as L.A. LIVE. Comprising of JW Marriott hotel and Ritz-Carlton boutique hotel. The sustainably designed tower earned LEED® Silver certification.

PROJECT DETAILS

224 Condominium Units, 1,001 Hospitality Units, LEED Silver Certification, Full-service spa, Fitness center, Pool, and Meeting space event

CONTRIBUTING COMPANIES

Developer: AEG

Architect: Gensler

Engineer: KS/FE

VISIT OUR SOCIALS

