

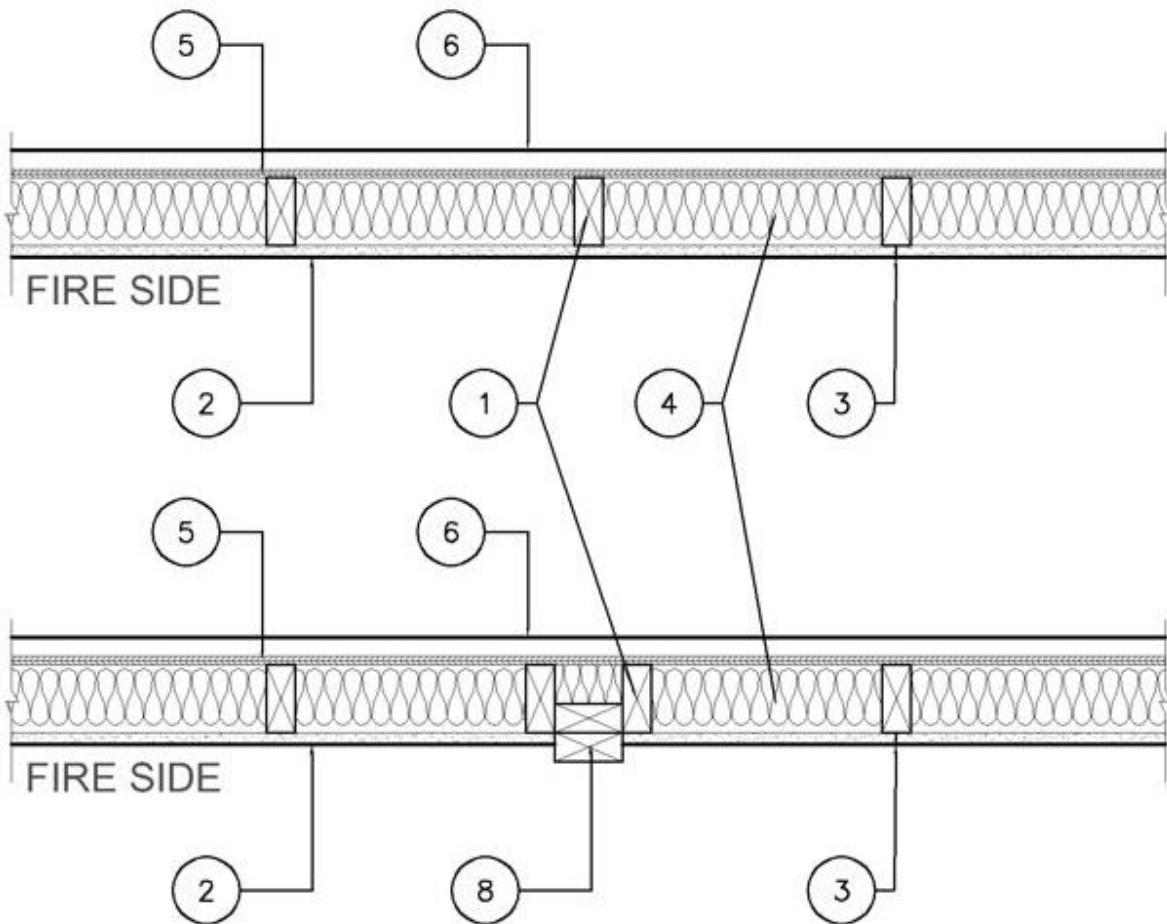
Design No. **U356**

May 25, 2022

**Bearing Wall Rating - 1 Hr Rating Exposed to Fire on Interior Face Only**  
**Bearing Wall Rating — 1 Hr Rating Exposed to Fire on Exterior Face (See Item 6E)**  
**Finish Rating — 23 Min or 25 Min (See Item 2C)**

This design was evaluated using a load design method other than the Limit States Design Method (e.g., Working Stress Design Method). For jurisdictions employing the Limit States Design Method, such as Canada, a load restriction factor shall be used — See Guide [BXUV](#) or [BXUV7](#)

\* Indicates such products shall bear the UL or cUL Certification Mark for jurisdictions employing the UL or cUL Certification (such as Canada), respectively.



1. **Wood Studs** — Nom 2 by 4 in. spaced 16 in. OC with two 2 by 4 in. top and one 2 by 4 in. bottom plates. Studs laterally-braced by wood structural panel sheathing (Item 5). When **Mineral and Fiber**

**Boards\*** (Item 5A) are considered as bracing for the studs, the load is restricted to 76% of allowable axial load. Walls effectively fire stopped at top and bottom of wall.

2. **Gypsum Board\*** — **Any 5/8 in. thick UL Classified Gypsum Board that is eligible for use in Design Nos. L501, G512 or U305.** Nom 5/8 in. thick, 4 ft wide, applied vertically and nailed to studs and bearing plates 7 in. OC with 6d cement-coated nails, 1-7/8 in. long with 1/4 in. diam head. When Item **Steel Framing Members\*** (Item 7 or any alternate clips), is used, gypsum panels attached to furring channels with 1 in. long Type S bugle-head steel screws spaced 12 in. OC.

When Item 7A **Steel Framing Members\***, is used, two layers of gypsum panels attached to furring channels. Base layer attached to furring channels with 1 in. long Type S bugle-head steel screws spaced 12 in. OC. Face layer attached to furring channels with 1-5/8 in. long Type S bugle-head steel screws spaced 12 in. OC. All joints in face layers staggered with joints in base layers.

**AMERICAN GYPSUM CO** ([View Classification](#)) — CKNX.R14196

**BEIJING NEW BUILDING MATERIALS PUBLIC LTD CO** ([View Classification](#)) — CKNX.R19374

**CABOT MANUFACTURING ULC** ([View Classification](#)) — CKNX.R25370

**CERTAINTED GYPSUM INC** ([View Classification](#)) — CKNX.R3660

**CGC INC** ([View Classification](#)) — CKNX.R19751

**CERTAINTED GYPSUM INC** ([View Classification](#)) — CKNX.R18482

**GEORGIA-PACIFIC GYPSUM L L C** ([View Classification](#)) — CKNX.R2717

**LOADMASTER SYSTEMS INC** ([View Classification](#)) — CKNX.R11809

**NATIONAL GYPSUM CO** ([View Classification](#)) — CKNX.R3501

**PABCO BUILDING PRODUCTS L L C, DBA PABCO GYPSUM** ([View Classification](#)) — CKNX.R7094

**PANEL REY S A** ([View Classification](#)) — CKNX.R21796

**SIAM GYPSUM INDUSTRY (SARABURI) CO LTD** ([View Classification](#)) — CKNX.R19262

**THAI GYPSUM PRODUCTS PCL** ([View Classification](#)) — CKNX.R27517

**UNITED STATES GYPSUM CO** ([View Classification](#)) — CKNX.R1319

**USG BORAL DRYWALL SFZ LLC** ([View Classification](#)) — CKNX.R38438

**USG MEXICO S A DE C V** ([View Classification](#)) — CKNX.R16089

2A. **Gypsum Board\*** — (As an alternate to Item 2, Not Shown) — Any 5/8 in. thick 4 ft wide gypsum panels that are eligible for use in Design Nos. L501, G512 or U305, supplied by the Classified Companies listed below shown in the **Gypsum Board\*** (CKNX) category. Applied vertically and attached to studs and bearing plates with 1-1/4 in. long Type W coarse thread gypsum panel steel screws spaced a max 8 in. OC, with last screw 1 in. from edge of board.

**CGC INC**

**UNITED STATES GYPSUM CO**

**USG BORAL DRYWALL SFZ LLC**

**USG MEXICO S A DE C V**

2B. **Gypsum Board\*** — (As an alternate to Item 2, Not Shown) — 5/8 in. thick 4 ft wide gypsum panels applied vertically and attached to studs and bearing plates with 1-1/4 in. long Type W coarse thread gypsum panel steel screws spaced a max 8 in. OC, with last screw 1 in. from edge of board.

**AMERICAN GYPSUM CO** — Types AGX-1, M-Glass, AG-C, LightRoc

**CABOT MANUFACTURING ULC** — Type X, 5/8 Type X, Type Blueglass Exterior Sheathing

**CERTAINTED GYPSUM INC** — Type C, Type X-1, Easi-Lite Type X-2

**GEORGIA-PACIFIC GYPSUM L L C** — Types X, Veneer Plaster Base-Type X, Water Rated-Type X, Sheathing Type-X, Soffit-Type X, Type X ComfortGuard Sound Deadening Gypsum Board.

**PABCO BUILDING PRODUCTS L L C, DBA PABCO GYPSUM** — Types PG-11, PGS-WRS, PGI.

**THAI GYPSUM PRODUCTS PCL** — Type C or Type X

2C. **Gypsum Board\*** — (As an alternate to Item 2, Not Shown) — For Use with Item 5A only - 5/8 in. thick 4 ft wide gypsum panels applied horizontally and attached to studs and bearing plates with 1-1/4 in. long Type W coarse thread gypsum panel steel screws spaced a max 8 in. OC, with last screws 1 in. and 4 in. from edges of board. Finish Rating is 25 min.

**CABOT MANUFACTURING ULC** — 5/8 Type X, Type Blueglass Exterior Sheathing

**GEORGIA-PACIFIC GYPSUM L L C** — Type X, Veneer Plaster Base-Type X, Water Rated-Type X, Sheathing Type-X, Soffit-Type X

**PABCO BUILDING PRODUCTS L L C, DBA PABCO GYPSUM** — Types PG-11, PGS-WRS, PGI

2D. **Gypsum Board\*** — (As an alternate to Item 2) — Not to be used with item 7. 5/8 in. thick, 4 ft. wide, paper surfaced, applied vertically only and fastened to the studs and plates with 6d cement coated nails 1-7/8 in. long, 0.0915 in. shank diam and 1/4 in. diam heads, 7 in. OC.

**NATIONAL GYPSUM CO** — Type SBWB

2E **Gypsum Board\*** — (As an alternate to Items 2 through 2D) — Nominal 5/8 in. thick, 4 ft wide panels, secured as described in Item 2.

**PABCO BUILDING PRODUCTS L L C, DBA PABCO GYPSUM** — Type QuietRock ES.

2F. **Gypsum Board\*** — (As an alternate to Item 2) — Not to be used with item 7. 5/8 in. thick, 4 ft. wide, paper surfaced, applied vertically or horizontally and fastened to the studs and plates with 1-1/4 in. long Type W coarse thread gypsum panel steel screws spaced a max 8 in. OC, with last screw 1 in. from edge of board.

**CERTAINEED GYPSUM INC** — Type SilentFX

2G. **Wall and Partition Facings and Accessories\*** — (As an alternate to Items 2 through 2F) — Nominal 5/8 in. thick, 4 ft wide panels, secured as described in Item 2.

**PABCO BUILDING PRODUCTS L L C, DBA PABCO GYPSUM** — Type QuietRock 527.

2H. **Gypsum Board\*** — (As an alternate to Item 2) — 5/8 in. thick gypsum panels, with beveled, square, or tapered edges, applied either horizontally or vertically. Gypsum panels fastened to framing with 1-1/4 in. long Type W coarse thread gypsum panel steel screws spaced a maximum 10 in. OC with the last two screws 4 and 1 in. from the edges of the board. When used in widths other than 48 in., gypsum panels are to be installed horizontally.

**CERTAINTEED GYPSUM INC** — Type LGFC6A (finish rating 21 min), Type LGFC2A, Type LGFC-C/A, Type LGFC-WD, Type LGLLX

2I. **Gypsum Board\*** — (As an alternate to Item 2) — 5/8 in. thick gypsum panels, with beveled, square, or tapered edges, applied either horizontally or vertically. Gypsum panels fastened to framing with 1-1/4 in. long Type W coarse thread gypsum panel steel screws spaced a max 8 in. OC, with last screw 1 in. from edge of board. When used in widths of other than 48 in., gypsum boards are to be installed horizontally.

**AMERICAN GYPSUM CO** — Types AGX-1 (finish rating 25 min.), M-Glass (finish rating 25 min.), AG-C (finish rating 25 min.), LightRoc (finish rating 25 min.)

**NATIONAL GYPSUM CO** — Type FSK, Type FSK-G, Type FSW, Type FSW-3, Type FSW-5, Type FSW-G, Type FSK-C, Type FSW-C, Type FSMR-C, Type FSW-6, Type FSL

2J. **Gypsum Board\*** — (As an alternate to Item 2) - 5/8 in. thick gypsum panels, with beveled, square, or tapered edges, applied either horizontally or vertically. Gypsum panels fastened to framing with 1-1/4 in. long Type W coarse thread steel screws spaced a max 8 in. OC with the last screw 1 in. from edge of board. When used in widths other than 48 in., gypsum boards are to be installed horizontally.

**CERTAINTEED GYPSUM INC** — Type C, Type X-1 (finish rating 26 min), Easi-Lite Type X (finish rating 24 min), Easi-Lite Type X-2, Type EGRG or GlasRoc or GlasRoc Sheathing (finish rating 23 min)

3. **Joints and Fastener Heads** — (Not Shown) — Gypsum board joints covered with tape and joint compound. Fastener heads covered with joint compound.

4. **Batts and Blankets\*** — Mineral fiber or glass fiber insulation, 3-1/2 in. thick, pressure fit to fill wall cavities between studs and plates. Mineral fiber insulation to be unfaced and to have a min density of 3 pcf. Glass fiber insulation to be faced with aluminum foil or kraft paper and to have a min density of 0.9 pcf (min R-13 thermal insulation rating).

See **Batts and Blankets\*** (BKNV) Category in the Building Materials Directory and **Batts and Blankets\*** (BZJZ) Category in the Fire Resistance Directory for names of Classified Companies.

4A. **Fiber, Sprayed\*** — As an alternate to Batts and Blankets (Item 4) — Spray applied cellulose material. The fiber is applied with water to completely fill the enclosed cavity in accordance with the application instructions supplied with the product with a nominal dry density of 2.7 lb/ft<sup>3</sup>. Alternate Application Method: The fiber is applied without water or adhesive at a nominal dry density of 3.5 lb/ft<sup>3</sup>, in accordance with the application instructions supplied with the product.

**U S GREENFIBER L L C** — INS735 and INS745 for use with wet or dry application. INS515LD, INS541LD, INS735, INS745, INS765LD, and INS773LD are to be used for dry application only.

4B. **Fiber, Sprayed\*** — As an alternate to Item 4 and 4A — Spray applied cellulose material. The fiber is applied with water to completely fill the enclosed cavity in accordance with the application instructions supplied with the product. Nominal dry density of 4.58 lb/ft<sup>3</sup>.

**NU-WOOL CO INC** — Cellulose Insulation

4C. **Fiber, Sprayed\*** — As an alternate to Batts and Blankets (Item 4) — Spray applied cellulose fiber. The fiber is applied with water to completely fill the enclosed cavity in accordance with the application instructions supplied with the product. The minimum dry density shall be 4.30 lbs/ft<sup>3</sup>.

**INTERNATIONAL CELLULOSE CORP** — Celbar-RL

4D. **Fiber, Sprayed\*** — As an alternate to Batts and Blankets (Item 4) — Spray applied, granulated mineral fiber material. The fiber is applied with adhesive, at a minimum density of 4.0 pcf, to completely fill the enclosed cavity in accordance with the application instructions supplied with the product. See Fiber, Sprayed (CCAZ).

**AMERICAN ROCKWOOL MANUFACTURING, LLC** — Type Rockwool Premium Plus

5. **Wood Structural Panel Sheathing** — Min 7/16 in. thick, 4 ft wide wood structural panels, min grade "C-D" or "Sheathing". Installed with long dimension of sheet (strength axis) or face grain of plywood parallel with or perpendicular to studs. Vertical joints centered on studs. Horizontal joints backed with nom 2 by 4 in. wood blocking. Attached to studs on exterior side of wall with 6d cement coated box nails spaced 6 in. OC at perimeter of panels and 12 in. OC along interior studs.

5A. **Mineral and Fiber Boards\*** — As an alternate to Item 5 - Min 1/2 in. thick, 4 ft wide sheathing, installed vertically to studs. Vertical joints centered on studs. Horizontal joints backed with nom 2 by 4 in. wood blocking. Attached to studs on exterior side of wall with 1-1/2 in. long galvanized roofing nails spaced 6 in. OC at perimeter of panels and 12 in. OC along interior studs. As an option a weather resistive barrier may be applied over the Mineral and Fiber Boards.

6. **Exterior Facings** — Installed in accordance with the manufacturer's installation instructions. One of the following exterior facings is to be applied over the sheathing:

A. **Vinyl Siding — Molded Plastic\*** — Contoured rigid vinyl siding having a flame spread value of 20 or less.

See **Molded Plastic** (BTAT) category in the Building Materials Directory for names of manufacturers.

B. **Particle Board Siding** — Hardboard exterior sidings including patterned panel or lap siding.

C. **Wood Structural Panel or Lap Siding** — APA Rated Siding, Exterior, plywood, OSB or composite panels with veneer faces and structural wood core, per PS 1 or APA Standard PRP-108, including textured, rough sawn, medium density overlay, brushed, grooved and lap siding.

D. **Cementitious Stucco** — Portland cement or synthetic stucco systems with self-furring metal lath or adhesive base coat. Thickness from 3/8 to 3/4 in., depending on system.

E. **Brick Veneer** — Any type on nom 4 in. wide brick veneer. When brick veneer is used, the rating is applicable with exposure on either face. Brick veneer fastened with corrugated metal wall ties attached over sheathing to wood studs with 8d nail per tie: ties spaced not more than each sixth course of brick and max 32 in. OC horizontally. One in. air space provided between brick veneer and sheathing.

F. **Exterior Insulation and Finish System (EIFS)** — Nom 1 in. **Foamed Plastic\*** insulation bearing the UL Classification Marking, attached over sheathing and finished with coating system, or Portland cement or synthetic stucco systems, in accordance with manufacturer's instructions. See **Foamed Plastic** (BRYX and CCVW) categories for names of Classified companies.

G. **Siding** — Aluminum or steel siding attached over sheathing to studs.

H. **Fiber-Cement Siding** — Fiber-cement exterior sidings including smooth and patterned panel or lap siding.

I. **Wall and Partition Facings and Accessories\*** — Stone veneer is mortar bonded to a lath, scratch coat and water resistant barrier applied to sheathing, installed in accordance with the manufacturers installation instructions, and meeting the requirements of local code agencies.

**ELDORADO STONE OPERATIONS L L C** — Type Eldorado Stone

J. **Cementitious Backer Units** — 1/2 in. or 5/8 in., min. 32 in. wide.- Applied vertically or horizontally with vertical joints centered over studs. Fastened to studs and runners with cement board screws of adequate length to penetrate stud by a minimum 3/4 in., spaced a max of 8 in. OC. Horizontal joints need not be backed by framing. When Cementitious Backer Units are used, the rating is applicable with exposure on either face. Cementitious Backer Units for use as substrate for exterior finishes such as ceramic tile, slate, marble, natural stone, manufactured stone, thin brick, or Portland cement or synthetic stucco.

**NATIONAL GYPSUM CO** — Type PermaBase

6A. **Building Units\*** — **As an alternate to Exterior Facing Item 6** — Insulated steel panels, 12 through 42 in. wide. Attached over sheathing through retainer clips to studs or support steel with No. 14 hex head self-tapping screws located at each joint in the concealed lip of the units and spaced in accordance with the structural design requirements. KINGSPAN INSULATED PANELS INC — Types 200, 300, 400, 900, or KS series, 2 through 6 in. thickness; CWP-V, H, 2 through 3 in. nominal thickness or Designwall 2000 or Designwall 4000, 2 and 3 in. nominal thickness.

7. **Steel Framing Members\*** — (Optional, Not Shown) — Furring Channels and Steel Framing Members as described below:

a. **Furring Channels** — Formed of No. 25 MSG galv steel. 2-9/16 in. or 2-23/32 in. wide by 7/8 in. deep, spaced 24 in. OC perpendicular to studs. Channels secured to studs as described in Item b. Ends of adjoining channels are overlapped 6 in. and tied together with double strand of No. 18 SWG galv steel wire near each end of overlap. As an alternate, ends of adjoining channels may be overlapped 6 in. and secured together with two self-tapping #6 framing screws, min. 7/16 in. long at the midpoint of the overlap, with one screw on each flange of the channel. Gypsum board attached to furring channels as described in Item 2.

b. **Steel Framing Members\*** — Used to attach furring channels (Item 7A) to studs. Clips spaced 48 in. OC., and secured to studs with No. 8 x 2-1/2 in. coarse drywall screw through the center grommet. Furring channels are friction fitted into clips. RSIC-1 clip for use with 2-9/16 in. wide furring channels. RSIC-1 (2.75) clip for use with 2-23/32 in. wide furring channels.

**PAC INTERNATIONAL L L C** — Types RSIC-1, RSIC-1 (2.75).

7A. **Steel Framing Members\*** — (Optional, Not Shown, As an alternate to Item 7) — Furring channels and Steel Framing Members as described below:

a. **Furring Channels** — Formed of No. 25 MSG galv steel, spaced 24 in. OC perpendicular to studs. Channels secured to studs as described in Item b. Ends of adjoining channels are overlapped 6 in. and tied together with double strand of No. 18 SWG galv steel wire near each end of overlap. Two layers of gypsum board attached to furring channels as described in Item 2.



b. **Steel Framing Members\*** — Used to attach furring channels (Item 7Aa) to interior side of studs. Clips spaced 48 in. OC., and secured to studs with two No. 8 x 2-1/2 in. coarse drywall screws, one through the hole at each end of the clip. Furring channels are friction fitted into clips.

**KINETICS NOISE CONTROL INC** — Type Isomax.

7B. **Steel Framing Members\*** — (Optional, Not Shown, As an alternate to Item 7) — Furring channels and Steel Framing Members as described below:

a. **Furring Channels** — Formed of No. 25 MSG galv steel. 2-3/8 in. wide by 7/8 in. deep, spaced 24 in. OC perpendicular to studs. Channels secured to studs as described in Item b. Ends of adjoining channels are overlapped 6 in. and tied together with double strand of No. 18 SWG galv steel wire near each end of overlap. As an alternate, ends of adjoining channels may be overlapped 6 in. and secured together with two self-tapping #6 framing screws, min. 7/16 in. long at the midpoint of the overlap, with one screw on each flange of the channel. Gypsum board attached to furring channels as described in Item 2.

b. **Steel Framing Members\*** — Used to attach furring channels (Item a) to studs. Clips spaced 48 in. OC. Genie clips secured to studs with No. 8 x 1-1/2 in. coarse drywall screw through the center hole. Furring channels are friction fitted into clips.

**PLITEQ INC** — Type Genie Clip

7C. **Steel Framing Members\*** — (Optional, Not Shown, As an alternate to Item 7) — Furring channels and Steel Framing Members as described below:

a. **Furring Channels** — Formed of No. 25 MSG galv steel. Spaced 24 in. OC perpendicular to studs. Channels secured to studs as described in Item b. Ends of adjoining channels overlapped 6 in. and tied together with double strand of No. 18 AWG galvanized steel wire. Gypsum board attached to furring channels as described in Item 2.

b. **Steel Framing Members\*** — Used to attach furring channels (Item 7Ca) to studs. Clips spaced 48 in. OC., and secured to studs with 2 in. coarse drywall screw with 1 in. diam washer through the center hole. Furring channels are friction fitted into clips.

**STUDCO BUILDING SYSTEMS** — RESILMOUNT Sound Isolation Clips - Type A237R

7D. **Steel Framing Members\*** — (Optional, Not Shown, As an alternate to Item 7) — Furring channels and Steel Framing Members as described below:

a. **Furring Channels** — Formed of No. 25 MSG galv steel. Spaced 24 in. OC perpendicular to studs. Channels secured to studs as described in Item 7Db. Ends of adjoining channels overlapped 6 in. and tied together with double strand of No. 18 AWG galvanized steel wire. Gypsum board attached to furring channels as described in Item 2.

b. **Steel Framing Members\*** — Used to attach furring channels (Item 7Da) to studs. Clips spaced 48 in. OC., and secured to studs with No. 8 x 2-1/2 in. coarse drywall screw through the center hole. Furring channels are friction fitted into clips.

**REGUPOL AMERICA** — Type SonusClip

7E. **Steel Framing Members\*** — (Optional, Not Shown, As an alternate to Item 7) — Resilient channels and Steel Framing Members as described below:

a. **Resilient Channels** — Formed of No. 25 MSG galv steel, spaced 24 in. OC, and perpendicular to studs. Channels secured to studs as described in Item b. Ends of adjoining channels overlapped 6 in.



and secured in place with two No. 8 15 x 1/2 in. Philips Modified Truss screws spaced 2-1/2 in. from the center of the overlap. Gypsum board attached to resilient channels as described in Item 2.

b. **Steel Framing Members\*** — Used to attach resilient channels (Item 7Ea) to studs. Clips spaced 48 in. OC., and secured to studs with No. 8 x 2-1/2 in. coarse drywall screw through the center hole. Resilient channels are secured to clips with one No. 10 x 1/2 in. pan-head self-drilling screw.

**KEENE BUILDING PRODUCTS CO INC** — Type RC+ Assurance Clip

7F **Steel Framing Members\*** — (Optional, Not Shown, As an alternate to Item 7) — Furring channels and Steel Framing Members as described below:

a **Furring Channels** — Formed of No. 25 MSG galv steel. 2-23/32 in. wide by 7/8 in. deep, spaced 24 in. OC perpendicular to studs. Channels secured to studs as described in Item b. Ends of adjoining channels are overlapped 6 in. and tied together with double strand of No. 18 SWG galv steel wire near each end of overlap. As an alternate, ends of adjoining channels may be overlapped 6 in. and secured together with two self-tapping #6 framing screws, min. 7/16 in. long at the midpoint of the overlap, with one screw on each flange of the channel. Gypsum board attached to furring channels as described in Item 2.

b **Steel Framing Members\*** — Used to attach furring channels (Item 7Fa) to studs. Clips spaced maximum 48 in. OC. Clips secured to studs with No. 8 x 2-1/2 in. coarse drywall screw through the center grommet. Furring channels are friction fitted into clips.

**CLARKDIETRICH BUILDING SYSTEMS** — Type ClarkDietrich Sound Clip

8. **Non-Bearing Wall Partition Intersection** — (Optional) — Two nominal 2 by 4 in. stud or nominal 2 by 6 in. stud nailed together with two 3in. long 10d nails spaced a max. 16 in. OC. vertically and fastened to one side of the minimum 2 by 4 in. stud with 3 in. long 10d nails spaced a max 16 in. OC. vertically. Intersection between partition wood studs to be flush with the 2 by 4 in. studs. The wall partition wood studs are to be framed by with a second 2 by 4 in. wood stud fastened with 3 in. long 10d nails spaced a max. 16 in. OC. vertically. Maximum one non-bearing wall partition intersection per stud cavity. Non-bearing wall partition stud depth shall be at a minimum equal to the depth of the bearing wall.

**\* Indicates such products shall bear the UL or cUL Certification Mark for jurisdictions employing the UL or cUL Certification (such as Canada), respectively.**

Last Updated on 2022-05-25