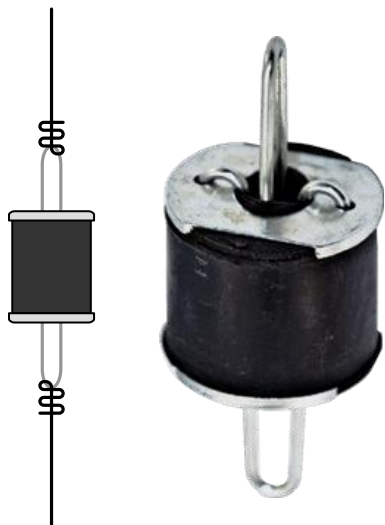




RSIC-WHI

The **RSIC-WHI** is designed for use with any wood, steel or concrete application where a dropped drywall ceiling is required. The RSIC-WHI isolator installed mid-wire between the structure and a drywall grid ceiling, or CRC and hat channel ceiling. The RSIC-WHI Isolator has acoustical design load ratings of 30, 50, 70, 100, 145, and 220 lbs per isolator. The RSIC-WHI is designed to work within a range between 50% and 100% of the published acoustical design load.



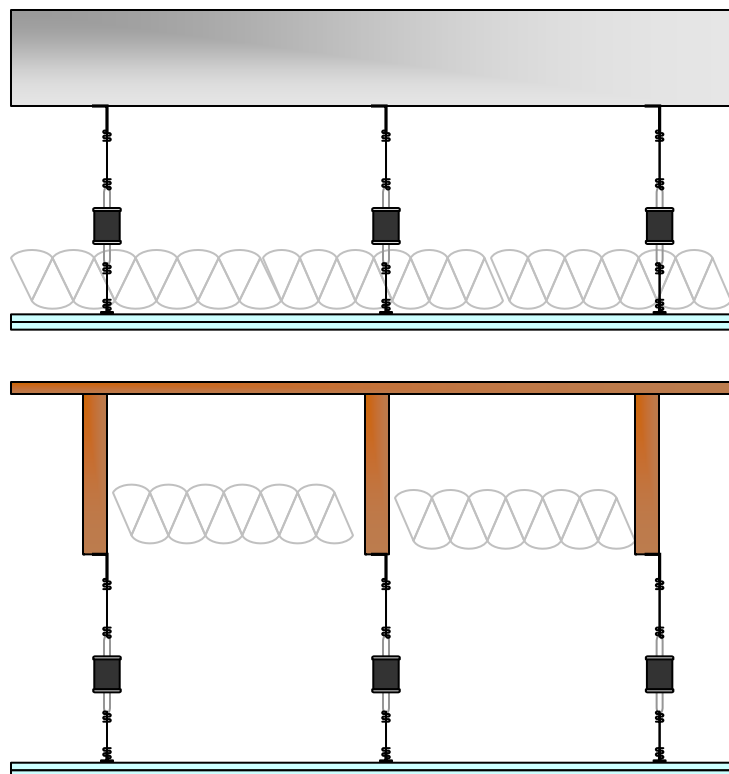
Blue	Brown	Green	Red	White	Yellow
15 to 30 Lbs	25 to 50 Lbs	35 to 70 Lbs	50 to 100 Lbs	73 to 145 Lbs	110 to 220 Lbs

Wood
Steel
Metal Deck

Steel
Condo
Commercial

Apartment
Retail
Conference Rooms

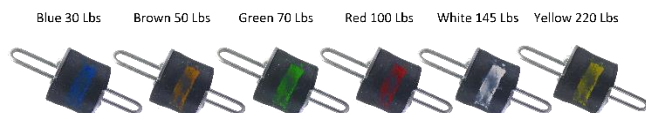
Recording Studio
Home Theater
Commercial theater



RSIC-WHI specifications:

Acoustical design load:	15 to 220 Lbs
Total deflection at load	6 mm
Double deflection	N/A
Low VOC	Yes
Adjustable	Yes
Cavity min	4"
Cavity Max	No limit
Adjustment limit	Wire length
Use on Ceilings	Yes
Use on walls	No
New Construction	Yes
Retro Fit	Yes

RSIC-WHI



1. Product Name

- RSIC-WHI Resilient Spring Isolation Clip System
 - RSIC-WHI

2. Manufacturer

PAC International, LLC
7260 W Azure Dr
Suite 140-213
Las Vegas, NV 89130
Phone: (866) 774-2100
Fax: (866) 649-2710
Email: info@pac-intl.com
Web: www.pac-intl.com

3. Product Description

RSIC-WHI

The RSIC-WHI is designed for use with any wood-framed, steel-framed, or concrete ceiling system where noise control is needed. The RSIC-WHI assembly decouples and isolates the gypsum board or sheet goods from the structure increasing the acoustical performance of the system.

The RSIC-WHI stops the noise and vibrations that typically would be allowed to transfer through the structure.

Materials and Composition

The RSIC-WHI clips are composed of galvanized or aluminum-zinc coated steel and is manufactured in Canby, OR. The RSIC rubber isolators are made of natural rubber and/or manufactured rubber compound. The hanger assembly bracket shall be designed to allow up to fifteen (15) degrees of vertical alignment of the suspension member without making metal-to-metal contact between the suspension and hanger assembly members. The RSIC-WHI shall be designed with an integral isolation insert selected and spaced to support the published weight. The hanger assembly shall consist of a wire loop top and bottom separated by the isoaltor. The isolation hanger deflection shall be up to 1/4" (6mm) at full published load.

Sizes and Weight-bearing Information

RSIC-WHI is available in 220 Lb, 145 Lb, 100 Lb, 70 Lb, 50 Lb, and 30 Lb acoustical load variations.

Load range

RSIC-WHI have a working load between the published max weight and 50% of that weight.

RSIC-WHI 30 = 15 to 30 lbs
RSIC-WHI 50 = 25 to 50 lbs
RSIC-WHI 70 = 35 to 70 lbs
RSIC-WHI 100 = 50 to 100 lbs
RSIC-WHI 145 = 72 to 145 lbs
RSIC-WHi 220 = 110 to 220 lbs

Product Limitations

For interior use only with operating temperatures of 40–100 degrees F (4.4–37.8 degrees C).

4. Technical Data

Applicable Standards

ASTM International (ASTM)

- **ASTM E90** Standard Test Method for Laboratory Measurement of Airborne Sound Transmission Loss of Building Partitions and Elements
- **ASTM E413** Classification for Rating Sound Insulation

Environmental Considerations

The RSIC-WHI may contribute to LEEDS points.
The rubber RSIC fittings can be recycled.

The steel recycled content is less than 10 percent as required for fire life and safety regulations.

5. Installation

General installation: Follow manufacturer's specific installation instructions.

- Install resilient isolators in accordance with manufacturer's instructions
- Use typical fasteners and 12 Ga hanger wire to connect ceiling to joist.
- Mechanically fasten L clip and hanger wire connected to the RSIC-WHI to structure with wire, screws, bolts or expansion anchors, dependent upon structure
- Secure hanger wire to mounting bracket, RSIC-WHI and drywall grid with a minimum of 3 turns.
- Space RSIC-WHI at maximum of 48 x 48 inches (1200 x 1200 mm) on center for ceilings.



World Leader
in Noise
Control
Solutions



GYPSUM BOARD ASSEMBLIES 092116
098500

- Do not exceed design load (pull and shear) of the stated load on each RSIC-WHI Spring Isolator.
- Flanking Noise:
 - Review installation details to prevent structure-borne flanking noise
 - Do not allow drywall furring channels or gypsum board to contact foreign materials, including floors, ceilings or wall framing members
- Gypsum Board:
 - Install gypsum board on ceilings with a 1/4 inch (6 mm) gap around perimeter for acoustical sealant application or RSIC Perimeter Tape.
 - Install gypsum board in accordance with ASTM C840 as specified in Section 09250
- RSIC Perimeter Tape:
 - Install RSIC-Perimeter Tape to the areas where non isolated areas will abut to the RSIC-WHI ceiling system. The RSIC-Perimeter Tape is not to be penetrated by fasteners.
- Acoustical Sealant:
 - Seal potential air leaks with acoustical sealant to achieve best Sound Transmission Class (STC)
 - Seal electrical outlets and penetrations with acoustical sealant
 - Seal over RSIC Perimeter Tape with non-hardening acoustical sealant.
- Putty Pad Sealant: Acoustically seal with putty pads, electrical boxes in ceilings in which RSIC-WHI are used

6. Availability and Cost

Please contact PAC International, LLC. for availability and pricing information.

7. Warranty

RSIC-WHI clips have no warranty.

8. Maintenance

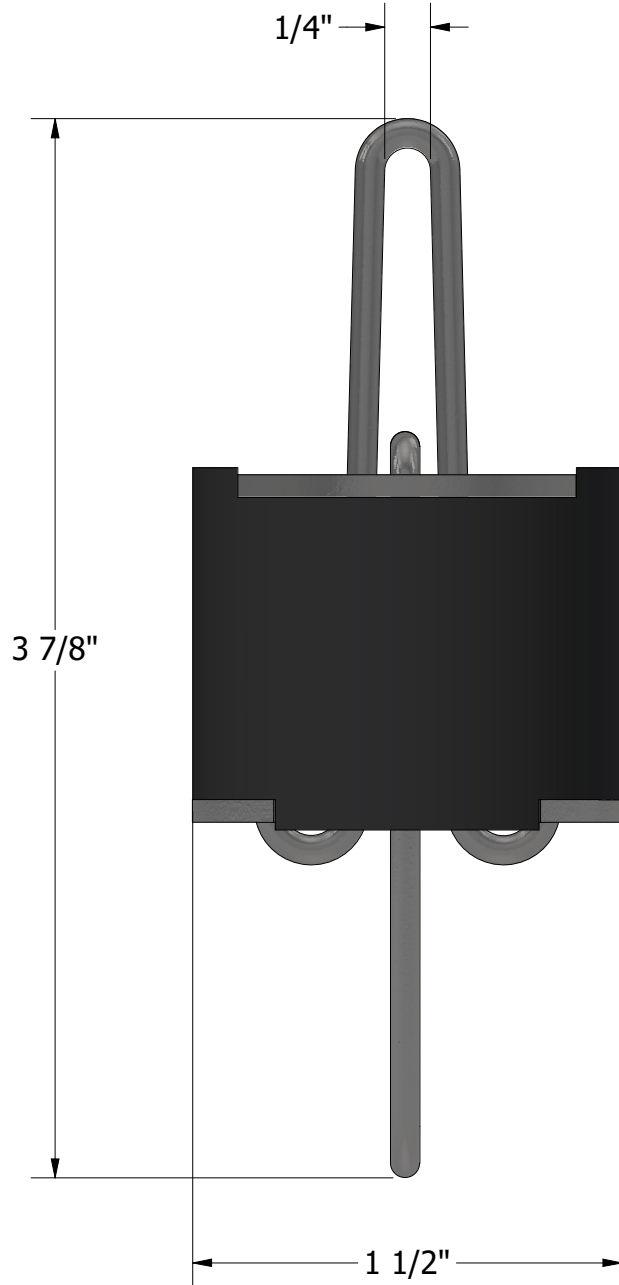
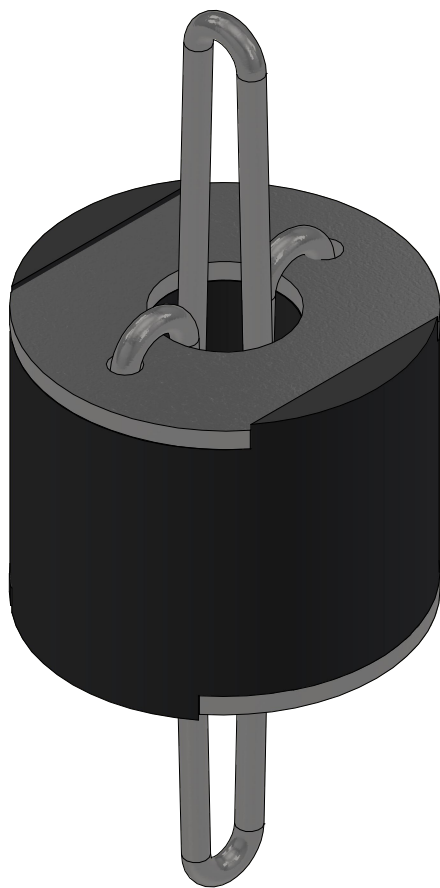
No maintenance is necessary.

9. Technical Services

PAC International Inc. offers online product pages, installation guides, and specification sheets. Technical information can be found on the website, www.pac-intl.com or by calling 866-774-2100, ext. 101 or 801. Fire ratings, sound test assemblies, CAD drawings, assembly drawings and clip specifications are also on the website.

10. Filing Systems

- Additional product information is available from the manufacturer upon request



RSIC-WHI	
1/30/2023	
SCALE 1.5	

World Leader in
Noise Control
Solutions

RSIC-WHI SOUND ISOLATION CLIP

RSIC-WHI INSTALALTION GUIDE

RSIC-WHI

WIRE HANGER ISOLATOR



PAC International, LLC. Tel: (866) 774-2100 Technical: (866) 649-2710 Web Site: www.pac-intl.com

©PAC International, LLC. All Rights Reserved. • (866) 774-2100 • Fax (866) 649-2710
RSIC® is a registered Trade Mark of PAC International, LLC.

RSIC-WHI SOUND ISOLATION CLIP

RSIC-WHI INSTALALTION GUIDE

RSIC-WHI- Isolator Spacing and load:

- **Maximum Acoustical Design Load:**

- 15 to 30 Lb Blue
- 25 to 50 Lb Brown
- 35 to 70 Lb Green
- 50 to 100 Lb Red
- 72 to 145 lb White
- 110 to 220 Lb Yellow

Maximum Spacing allowed: 48" x 48" oc.

- **Ceilings:**

- Resilient Sound Isolation Clip (RSIC-WHI) shall be 48 inches by 48 inches on center maximum.
- Fasten the Resilient Sound Isolation Clip (RSIC-WHI) to the hanger wire between the structure and the finish layer.
- Locate the first and last row of RSIC-WHI clips within 8 inches from the wall.
- Min. 12 Ga annealed hanger wire tied through the existing wire loop of the RSIC-WHI clip.
- When using tie wire attached to the RSIC-WHI clip to hang a drywall grid ceiling follow the installation instruction provided by the manufacturer of the grid ceiling system.
- At wall intersection(Optional) add RSIC Perimeter tape behind wall angle or between gypsum board ceiling and wall intersection.

General Information:

- Resilient Sound Isolation Clip (RSIC-WHI) ceiling system shall not carry heavy loads such as plumbing, or HVAC duct unless specifically engineered.
- Seal all potential air leaks with non-hardening acoustical caulking to achieve best noise control results. Use fire rated sealant where required



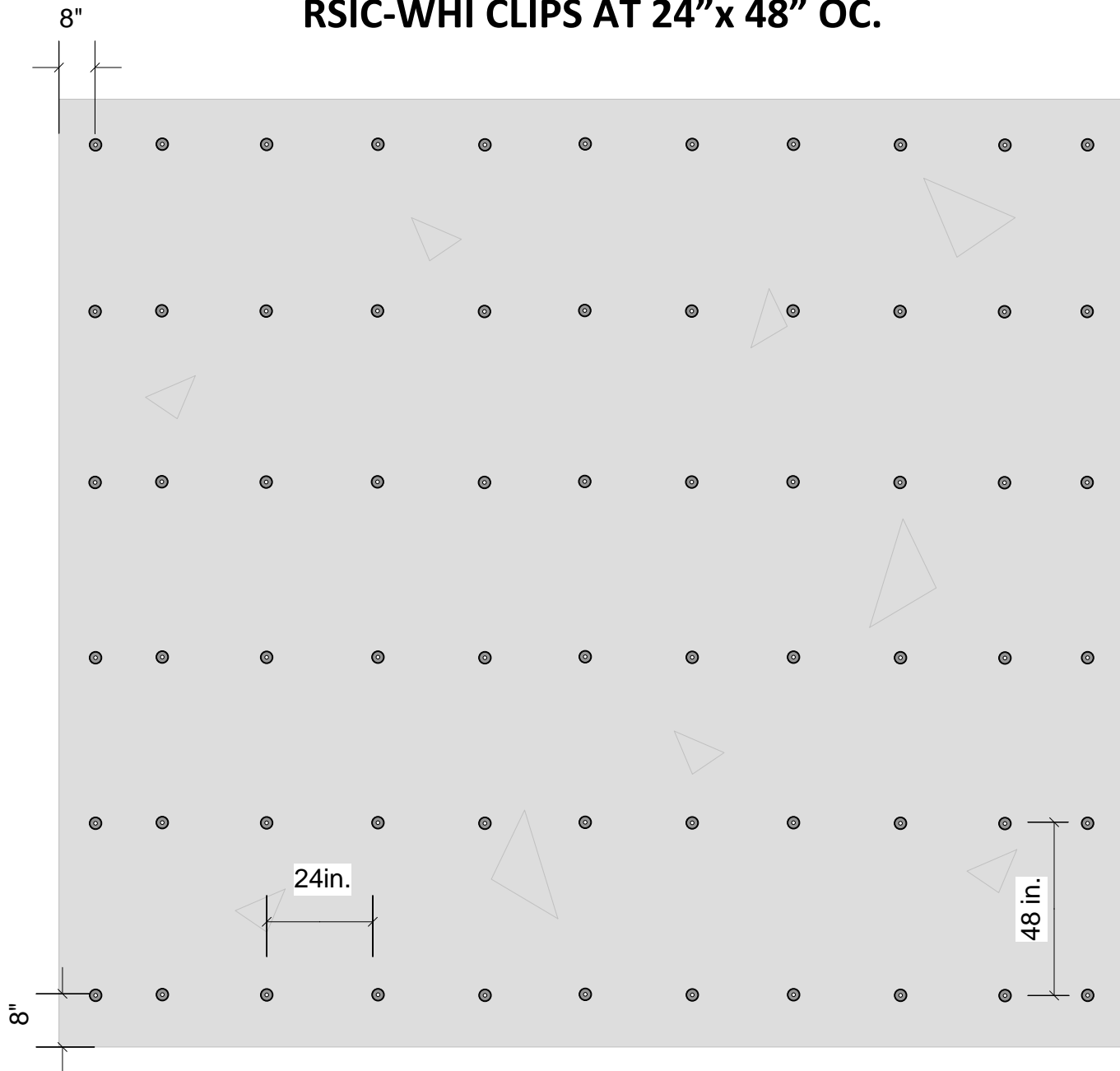
RSIC-WHI SOUND ISOLATION CLIP

RSIC-WHI INSTALALTION GUIDE

APPLICATION RECOMMENDATIONS FOR
CEILINGS, WOOD, STEEL, or CONCRETE.

INSTALLING RESILIENT SOUND ISOLATION CLIPS (RSIC-WHI)

RSIC-WHI CLIPS AT 24"x 48" OC.



PAC International, LLC. Tel: (866) 774-2100 Technical: (866) 649-2710 Web Site: www.pac-intl.com

©PAC International, LLC. All Rights Reserved. • (866) 774-2100 • Fax (866) 649-2710
RSIC® is a registered Trade Mark of PAC International, LLC.

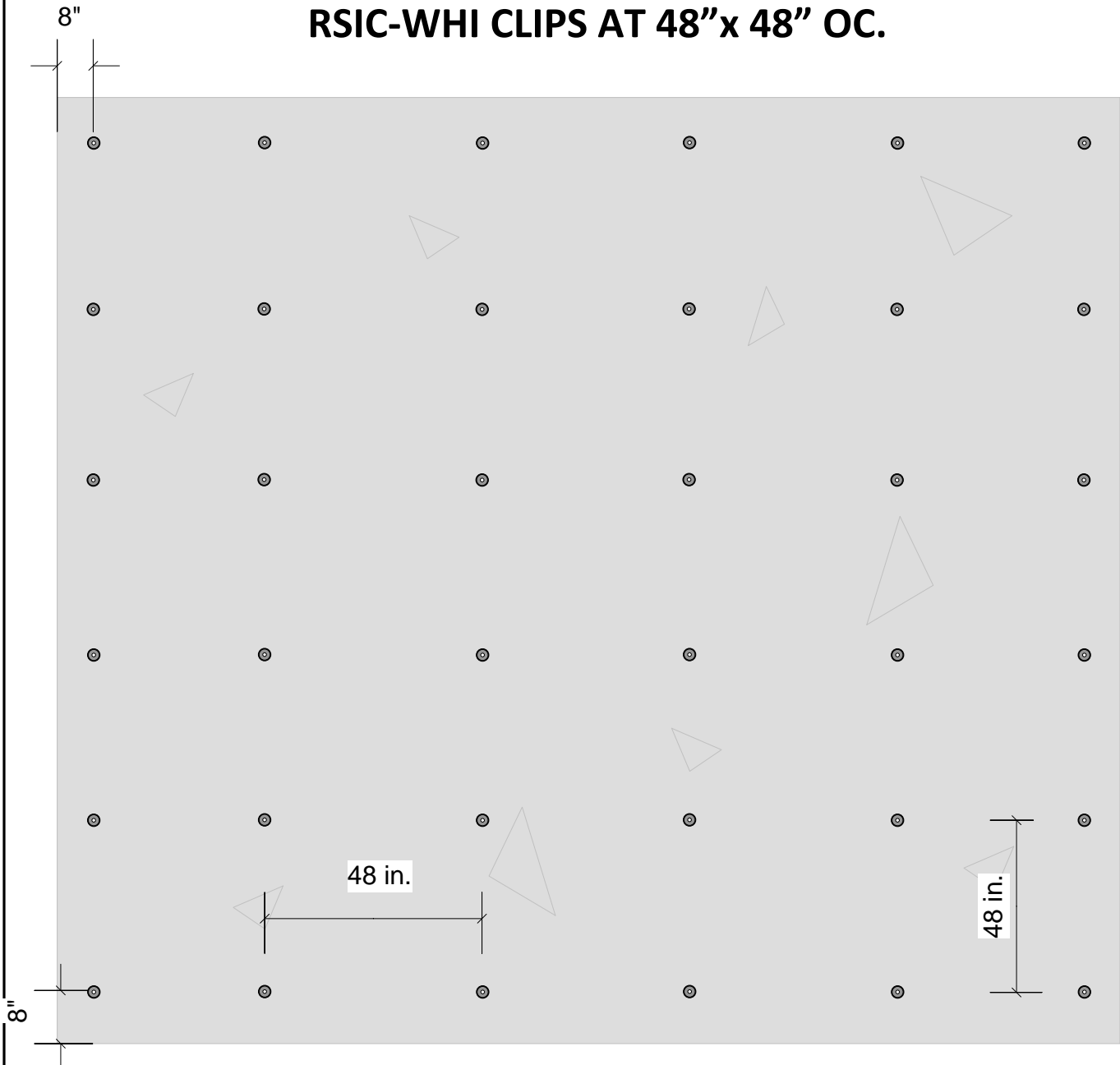
RSIC-WHI SOUND ISOLATION CLIP

RSIC-WHI INSTALALTION GUIDE

APPLICATION RECOMMENDATIONS FOR
CEILINGS, WOOD, STEEL, or CONCRETE.

INSTALLING RESILIENT SOUND ISOLATION CLIPS (RSIC-WHI)

RSIC-WHI CLIPS AT 48"x 48" OC.



PAC International, LLC. Tel: (866) 774-2100 Technical: (866) 649-2710 Web Site: www.pac-intl.com

©PAC International, LLC. All Rights Reserved. • (866) 774-2100 • Fax (866) 649-2710
RSIC® is a registered Trade Mark of PAC International, LLC.

RSIC-WHI SOUND ISOLATION CLIP

RSIC-WHI INSTALALTION GUIDE



Members of the International Code Council

WARRANTY DISCLAIMER AND LIABILITY LIMITATION LANGUAGE

NO EXPRESS OR IMPLIED WARRANTIES

THERE IS NO WARRANTY, REPRESENTATION OR CONDITION OF ANY KIND; AND ANY WARRANTY, EXPRESS OR IMPLIED, IS EXCLUDED AND DISCLAIMED, INCLUDING THE IMPLIED WARRANTIES OF MERCHANTABILITY AND OF FITNESS FOR A PARTICULAR PURPOSE. Some states do not allow limitations on implied warranties, so the above limitation may not apply to you.

LIABILITY LIMITED TO RETURN OF PURCHASE PRICE

IT IS AGREED THAT SELLER'S LIABILITY AND PURCHASER'S SOLE REMEDY, WHETHER IN CONTRACT, UNDER ANY WARRANTY, IN TORT (INCLUDING NEGLIGENCE), IN STRICT LIABILITY OR OTHERWISE, SHALL NOT EXCEED THE RETURN OF THE AMOUNT OF THE PURCHASE PRICE PAID BY PURCHASER, AND UNDER NO CIRCUMSTANCES SHALL SELLER BE LIABLE FOR ANY SPECIAL, INCIDENTAL OR CONSEQUENTIAL DAMAGES, INCLUDING, BUT NOT LIMITED TO, PERSONAL INJURY, PROPERTY DAMAGE, DAMAGE TO OR LOSS OF EQUIPMENT, LOST PROFITS OR REVENUE, COSTS OF RENTING REPLACEMENTS AND OTHER ADDITIONAL EXPENSES, EVEN IF SELLER HAS BEEN ADVISED OF THE POSSIBILITY OF SUCH DAMAGES. THE PRICE STATED FOR THE EQUIPMENT IS A CONSIDERATION IN LIMITING SELLER'S LIABILITY AND PURCHASER'S REMEDY. Some states do not allow the exclusion or limitation of incidental or consequential damages, so the above limitation or exclusion may not apply to you.

SELLER NOT LIABLE FOR PURCHASER'S NEGLIGENCE

SELLER WILL NOT BE LIABLE FOR ANY DAMAGES, LOSSES OR EXPENSES AS A RESULT OF PURCHASER'S NEGLIGENCE, WHETHER DEEMED ACTIVE OR PASSIVE AND WHETHER OR NOT ANY SUCH NEGLIGENCE IS THE SOLE CAUSE OF ANY SUCH DAMAGE, LOSS OR EXPENSE.

MODEL FOR DEMONSTRATION PURPOSES ONLY

THE MODEL OR SAMPLE SHOWN BY SELLER TO BUYER IS USED FOR DEMONSTRATION PURPOSES ONLY. THERE IS NO WARRANTY THAT THE GOODS AS DELIVERED SHALL CONFORM TO THE MODEL OR SAMPLE, AND CONFORMITY OF THE GOODS TO THE MODEL OR SAMPLE IS NOT PART OF THE BASIS OF THE BARGAIN BETWEEN SELLER AND BUYER.

NO WARRANTY OR COMPLIANCE WITH SAFETY CODE OR REGULATION

SELLER DOES NOT WARRANT THAT ANY OF THE GOODS SOLD WILL MEET OR COMPLY WITH THE REQUIREMENTS OF ANY SAFETY CODE, BUILDING OR DWELLING CODE, OR REGULATION OF ANY STATE, MUNICIPALITY OR OTHER JURISDICTION.

NEVADA LAW APPLIES

SELLER AND BUYER AGREE THAT ALL ASPECTS OF THIS TRANSACTION INCLUDING THE APPLICABLE STATUTE OF LIMITATIONS SHALL BE GOVERNED BY THE INTERNAL LAW OF THE STATE OF NEVADA, AND NOT THE LAWS OF CONFLICTS.

This warranty gives you specific legal rights, and you may also have other rights which vary from state to state.

PAC International, LLC. Tel: (866) 774-2100 Technical: (866) 649-2710 Web Site: www.pac-intl.com

©PAC International, LLC. All Rights Reserved. • (866) 774-2100 • Fax (866) 649-2710
RSIC® is a registered Trade Mark of PAC International, LLC.



World Leader in
Noise Control
Solutions



LEED Analysis **RSIC-WHI**

Recycled Content

PAC International's RSIC-WHI does not contain significant recycled content.

Fabrication Location

The RSIC-WHI is manufactured in Canby, OR 97013

Material Source

The extraction points for the materials in these products cannot be verified. Assume they are outside the 500 mile radius.



World Leader in
Noise Control
Solutions



RSIC-1
RSIC-SI-X
RSIC-SI-X ADM
RC-1 Boost
PAC-RCB
RSIC-SI-1 Ultra
RSIC-SI-CRC EZ
RSIC-SI-WHI
RSIC-SI-FF
RSIC-1 EXT04
RISC-1.5 CRC
RSIC-1 Low Profile
RSIC-1 Edge
RSIC-1 TTC
RSIC-1 Retro
RSIC-1 Backer
RSIC-1 ADM
RSIC-U
RSIC-U-HD
RSIC-WFI
RSIC-FGP
RSIC-DC04
RSIC-DC04 HD/DD
RSIC-DC04X2
RSIC-DC04X2 HD/DD
RSIC-V
RSIC-2
RSIC-2 Retro
RSIC-CWB
RSIC-CWB HD/DD
RSIC-CWB HD/DD DC
RSIC-Joist Isolator
RSIC-GDS Kit
RSIC-AMI
RSIC-FS TV
RSIC-Perimeter Tape
RSIC Super Screw
RSIC-Putty Pad
RSIC-Multi Clip
RSIC-FRC-HD
PAC-IFB

Safety Data Sheet

Article Statement

(PAC International, LLC Wall and Ceiling Isolation Products)

This document is provided for clarification of the Safety Data Sheets that you have requested for our product(s). OSHA Hazard Communication Standard requires a SDS for hazardous chemicals; however, the standard exempts all articles from the requirement. The explanation of an article is described per OSHA definition below.

Pursuant to 29 CFR 1910.1200 (b) (6) (v) and (c), the product described herein is an “article” or is otherwise excluded from OSHA regulations requiring that a Material Safety Data Sheet be prepared for it.

An article defined: manufactured item other than a fluid or particle: (i) which is formed to a specific shape or design during manufacturing; (ii) which has an end use function (s) dependent in whole or in part upon its shape or design during end use; and (iii) which does not release, or other wise result in exposure to, a hazardous chemical under normal conditions of use.

For technical information and additional resources covering these products please refer to PAC International published literature, e.g., data sheets, product drawings, and installation guidelines at www.pac-intl.com

As of the date of this document, the foregoing information is believed to be accurate and is provided in good faith to comply with applicable federal and state laws. However, no warranty or representation of law or fact, with respect to such information, is intended or given.



**World Leader in
Noise Control
Solutions**

RSIC-1 ®
RSIC-SI-X
RSIC-SI-X ADM
RSIC-SI-X Low Profile
RSIC-SI-X CRC
RC-1 Boost ®
PAC-RCB
RSIC-SI-CRC2 LP
RSIC-SI-1 Ultra
RSIC-SI-CRC EZ
RSIC-SI-WHI
RSIC-SI-FF
RSIC-1 EXT04
RISC-1.5 CRC
RSIC-1 Low Profile
RSIC-1 Edge
RSIC-1 TTC
RSIC-1 Retro
RSIC-1 Backer
RSIC-1 ADM
RSIC-U
RSIC-U-HD
RSIC-WFI
RSIC-FGP
RSIC-DC04
RSIC-DC04 HD/DD
RSIC-DC04X2
RSIC-DC04X2 HD/DD
RSIC-V
RSIC-V Backer
RSIC-2
RSIC-2 Retro
RSIC-CWB
RSIC-CWB HD/DD
RSIC-CWB HD/DD DC
RSIC-Joist Isolator
RSIC-GDS Kit
RSIC-AMI
RSIC-FS TV
RSIC-Perimeter Tape
RSIC Super Screw
RSIC-Putty Pad
RSIC-Multi Clip
RSIC-FRC-HD
PAC-IFB

RSIC ® Product Warranty Disclaimer

WARRANTY DISCLAIMER AND LIABILITY LIMITATION LANGUAGE **ONE YEAR WARRANTY**

Seller warrants to the original purchaser that its products are free from defects in material or workmanship for one year from the date of purchase from seller. Any allegedly defective product that is portable must be returned to seller prepaid. If upon examination it appears to the seller's satisfaction that the product is defective, seller shall repair, replace or return the purchase price of the product at seller's option.

EXCEPT FOR THE FORGOING, THERE IS NO WARRANTY, REPRESENTATION OR CONDITION OF ANY KIND; AND ANY OTHER WARRANTY, EXPRESS OR IMPLIED, IS EXCLUDED AND DISCLAIMED. Some states do not allow limitations on implied warranties, so the above limitation may not apply to you.

LIABILITY LIMITED TO RETURN OF PURCHASE PRICE

IT IS AGREED THAT SELLER'S LIABILITY AND PURCHASER'S SOLE REMEDY, WHETHER IN CONTRACT, UNDER ANY WARRANTY, IN TORT (INCLUDING NEGLIGENCE), IN STRICT LIABILITY OR OTHERWISE, SHALL NOT EXCEED THE RETURN OF THE AMOUNT OF THE PURCHASE PRICE PAID BY PURCHASER, AND UNDER NO CIRCUMSTANCES SHALL SELLER BE LIABLE FOR ANY SPECIAL, INCIDENTAL OR CONSEQUENTIAL DAMAGES, INCLUDING, BUT NOT LIMITED TO, PERSONAL INJURY, PROPERTY DAMAGE, DAMAGE TO OR LOSS OF EQUIPMENT, LOST PROFITS OR REVENUE, COSTS OF RENTING REPLACEMENTS AND OTHER ADDITIONAL EXPENSES, EVEN IF SELLER HAS BEEN ADVISED OF THE POSSIBILITY OF SUCH DAMAGES. THE PRICE STATED FOR THE EQUIPMENT IS A CONSIDERATION IN LIMITING SELLER'S LIABILITY AND PURCHASER'S REMEDY. Some states do not allow the exclusion or limitation of incidental or consequential damages, so the above limitation or exclusion may not apply to you.

SELLER NOT LIABLE FOR PURCHASER'S NEGLIGENCE

SELLER WILL NOT BE LIABLE FOR ANY DAMAGES, LOSSES OR EXPENSES AS A RESULT OF PURCHASER'S NEGLIGENCE, WHETHER DEEMED ACTIVE OR PASSIVE AND WHETHER OR NOT ANY SUCH NEGLIGENCE IS THE SOLE CAUSE OF ANY SUCH DAMAGE, LOSS OR EXPENSE.

MODEL FOR DEMONSTRATION PURPOSES ONLY

THE MODEL OR SAMPLE SHOWN BY SELLER TO BUYER IS USED FOR DEMONSTRATION PURPOSES ONLY. THERE IS NO WARRANTY THAT THE GOODS AS DELIVERED SHALL CONFORM TO THE MODEL OR SAMPLE, AND CONFORMITY OF THE GOODS TO THE MODEL OR SAMPLE IS NOT PART OF THE BASIS OF THE BARGAIN BETWEEN SELLER AND BUYER.

NO WARRANTY OR COMPLIANCE WITH SAFETY CODE OR REGULATION

SELLER DOES NOT WARRANT THAT ANY OF THE GOODS SOLD WILL MEET OR COMPLY WITH THE REQUIREMENTS OF ANY SAFETY CODE, BUILDING OR DWELLING CODE, OR REGULATION OF ANY STATE, MUNICIPALITY OR OTHER JURISDICTION.

NEVADA LAW APPLIES

SELLER AND BUYER AGREE THAT ALL ASPECTS OF THIS TRANSACTION INCLUDING THE APPLICABLE STATUTE OF LIMITATIONS SHALL BE GOVERNED BY THE INTERNAL LAW OF THE STATE OR NEVADA, AND NOT THE LAWS OF CONFLICTS.

This warranty gives you specific legal rights, and you may also have other rights which vary from state to state