



### RSIC®-SI-X Low Profile



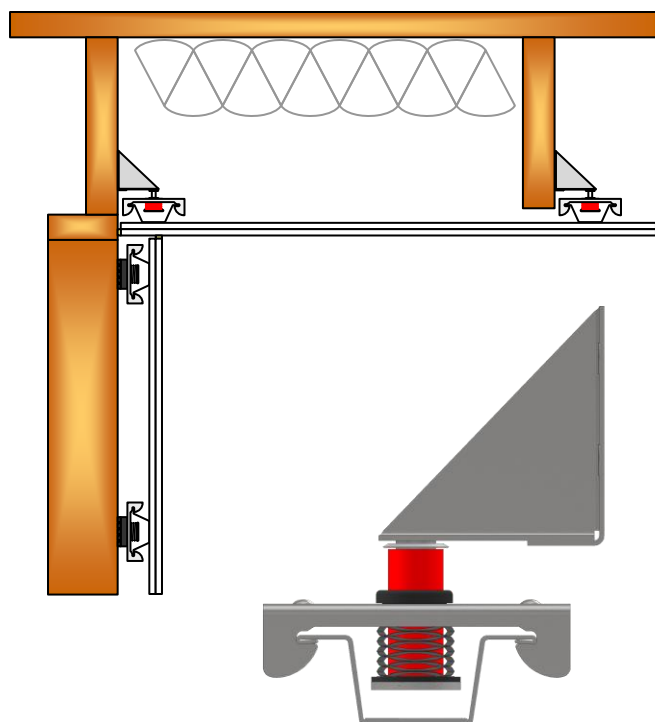
PAC's RSIC-SI-X is a patented low-profile spring isolator that provides superior low-frequency isolation compared to typical rubber sound isolation clips. The RSIC-SI-X is designed for faster and easier installation compared to industry-standard 1" deflection springs because it attaches directly to the underside of the structure and requires no additional backing.

The RSIC-SI-X Low Profile comes with a triangular mounting bracket that allows it to be mounted directly to the side of a joist. This allows the hat channel to be run between the joists to maximize the ceiling height, with a cavity between the joists and gypsum board as small as ½".

Wood Open Web Truss
I-Joist
Solid Wood Joist

Basement ADU
Basement Home Theater
Basement Recording Studio

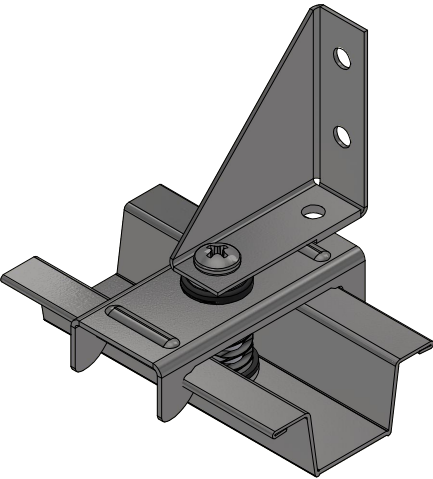
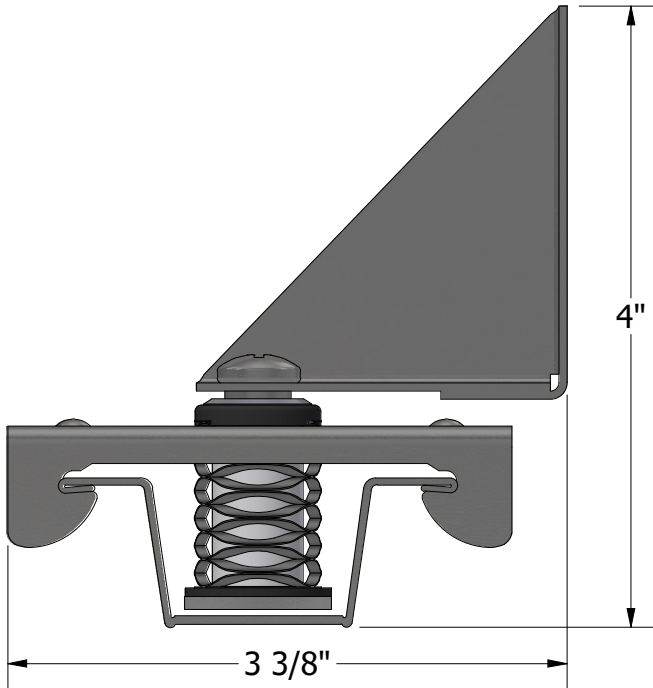
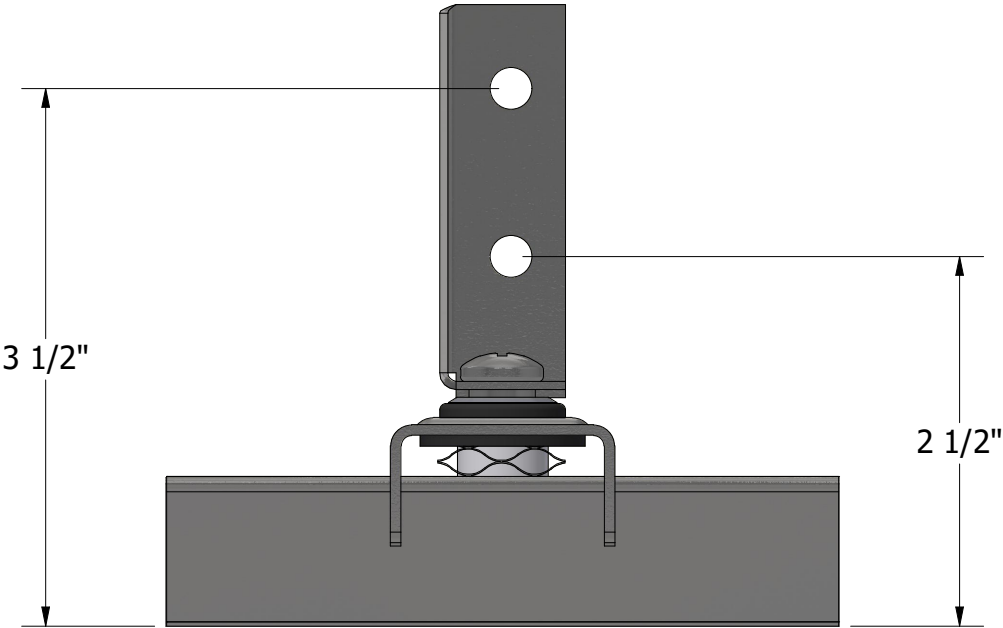
Edge of Ceiling
Any Low-profile Application



#### RSIC-SI-X Low Profile Specifications:

Acoustical design load:	7 - 26 Lbs
Total deflection	3/8"
Minimum Cavity Depth	1/2"
Use in Ceilings	Yes
Use in New Construction	Yes
Use in Retrofit	No
Spring Isolation	Yes
Rubber Isolation	Yes
Pre-Calibrated	Yes
Pre-Assembled	Yes
Made, Tested, Engineered, Designed, and Calibrated In USA	

RSIC-SI-X Low Profile



RSIC-SI-X  
Low Profile

2/8/2024

SCALE  
7/8

**PAC**  
International

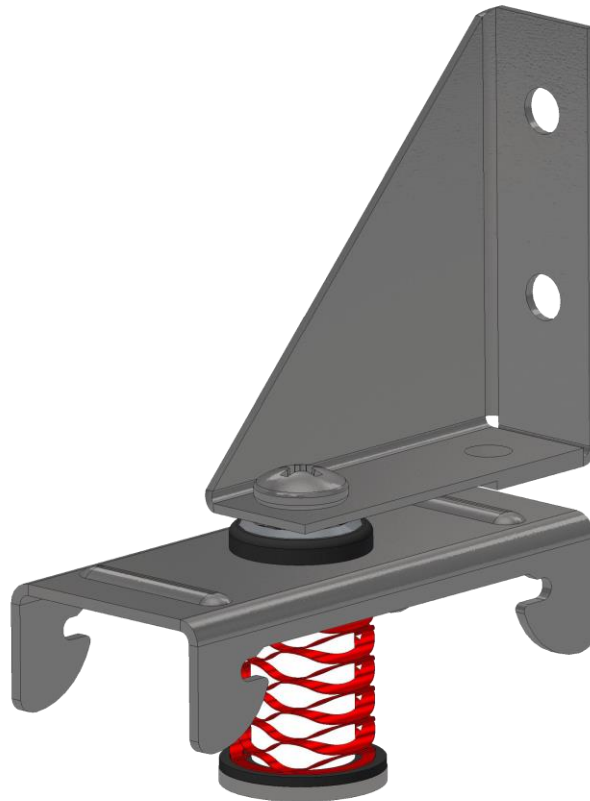
World Leader in  
Noise Control  
Solutions



# **RSIC-SI-X LOW PROFILE SOUND ISOLATION CLIP**

**RSIC-SI-X LOW PROFILE INSTALLATION GUIDE**

## **RSIC-SI-X Low Profile**

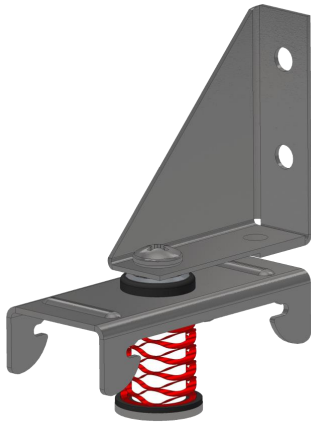


**SHIPPED FULLY  
ASSEMBLED  
AND CALIBRATED**

**PAC International, LLC. Tel: (866) 774-2100 Web Site: [www.PACInternationalLLC.com](http://www.PACInternationalLLC.com)**

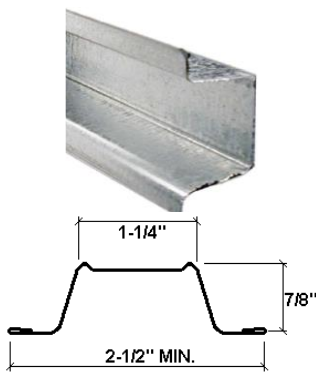
©2024 PAC International, LLC. All Rights Reserved. • (866) 774-2100 RSIC® is a registered Trade Mark

# RSIC-SI-X LOW PROFILE SOUND ISOLATION CLIP



## Resilient Sound Isolation Clip (RSIC-SI-X LOW PROFILE)

- Spacing: maximum 48" OC
- Maximum acoustical design load: 7 lbs, 13 lbs, and 26lbs
- RSIC-LOW PROFILE is designed for use where the RSIC-SI-X clip has a profile that is too large, and a lower profile design is desired.
- For example: A basement ceiling with an existing low ceiling would lose 1-3/4" with the standard RSIC-1 clip. The RSIC-Low Profile ceiling design has a profile as low as 1/2 inch



## Drywall Furring Channel:

- **Channel:** 25 gauge, hemmed edge detail required on all 25 gauge furring channel. Meets or exceeds SSMA requirements.
- **Depth:** 7/8 inch
- **Width Bottom:** 2-1/2 inch wide minimum.
- **Width Top:** 1-1/4 inch wide

Splice drywall furring channel (hat track) with 6 inch overlap in mid span (between two clips) secure with 18 ga tie wire, or two 7/16" framing screws.



## Fasteners:

- **RSIC-SI-X Low Profile Spring to Wood:** #8 X 1-1/2 inch min. coarse thread. (Recommended #12 or #10 x 1-1/2")
- **RSIC-SI-X Low Profile Spring to Steel:** #8 x 1" inch min. fine thread. (Recommended #12 or #10 x 1")

**26 Lb**

**13 Lb**

**7 Lb**

## Resilient Sound Isolation Clip (RSIC-SI-X Spring)

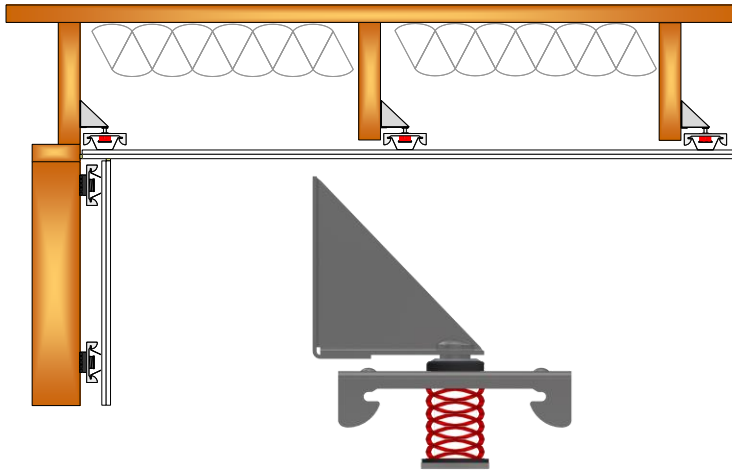
- **Maximum Spacing:** 48 inches on center
- **Design Load at 3/8" deflection from free height**
- **Red = 26 Lbs**
- **Blue = 13 Lbs**
- **White = 7 Lbs**

PAC International, LLC. Tel: (866) 774-2100 Web Site: [www.PACInternationalLLC.com](http://www.PACInternationalLLC.com)

©2024 PAC International, LLC. All Rights Reserved. • (866) 774-2100 RSIC® is a registered Trade Mark

# RSIC-SI-X LOW PROFILE SOUND ISOLATION CLIP

## RSIC-SI-X LOW PROFILE INSTALLATION GUIDE



### RSIC-SI-X LOW PROFILE

RSIC-SI-X LOW PROFILE Clip with an up facing L bracket attaches to the side of the joist allowing the RSIC clip to be recessed into the joist cavity. The Furring channel is parallel to the joist with only ½” of the channel extending below the button of the joist.

### Ceilings:

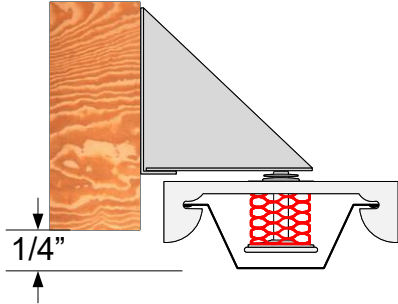
- Resilient Sound Isolation Clips (RSIC-SI-X Low Profile Spring) maximum spacing 16” x 48” or 24” x 32” on center .
- Layout the RSIC-SI-X Low Profile Spring clips according to general guidelines represented in this installation manual.
- Any additional or non standard room dimensions need to be addressed.
- Verify the correct quantity of each RSIC-SI-X Low Profile Spring isolators (weight / color) is included in the shipment.
- Layout the RSIC-SI-X Low Profile Spring clips out on the floor (reflecting the ceiling above) Ensure there are no additional items required to complete the installation.
  - Red 26 Lb clips are for the field
  - Blue 13 Lb clips are for the field, edge.
  - White 7 Lb clips are for edge, corner, and or infill where additional support is needed
- Fasten the Resilient Sound Isolation Clip (RSIC-SI-X Low Profile Springs) to the structure with fasteners approved for a minimum pull-out and shear of 100 lbs. Allowing for up to 3/8” deflection after the gypsum board has been installed.
- Using a laser level, or tape measure fasten all of the RSIC-SI-X Low Profile clips to the side of joist ensuring all the RSIC-SI-X Low Profile clips are in the same level. Height can only be adjusted by the position of the fasteners into the joist.
- Ensure all RSIC Low Profile clips are securely fastened to the structure with a minimum #8 x 1-1/2" long screw for wood framed systems
- At the perimeter, the distance between the wall and first support for the drywall shall be less than 8”.
- Variances in the field may require additional adjustment to ensure a consistent system. (see field calibration guide)
- When attaching plywood or other hard surface materials to light gauge drywall furring channel use RSIC-Super Coarse screw

PAC International, LLC. Tel: (866) 774-2100 Web Site: [www.PACInternationalLLC.com](http://www.PACInternationalLLC.com)

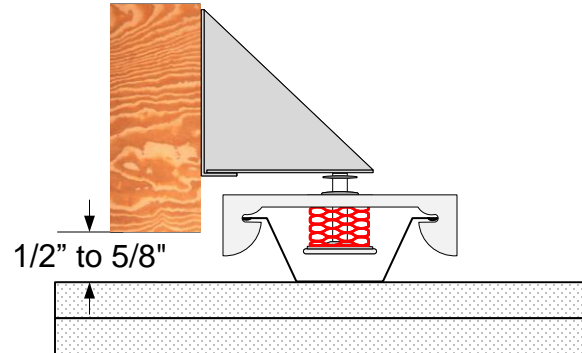
©2024 PAC International, LLC. All Rights Reserved. • (866) 774-2100 RSIC® is a registered Trade Mark

# RSIC-SI-X LOW PROFILE SOUND ISOLATION CLIP

Spring Height before gypsum board is installed.



Spring Height after gypsum board is installed.



## **Ceilings:**

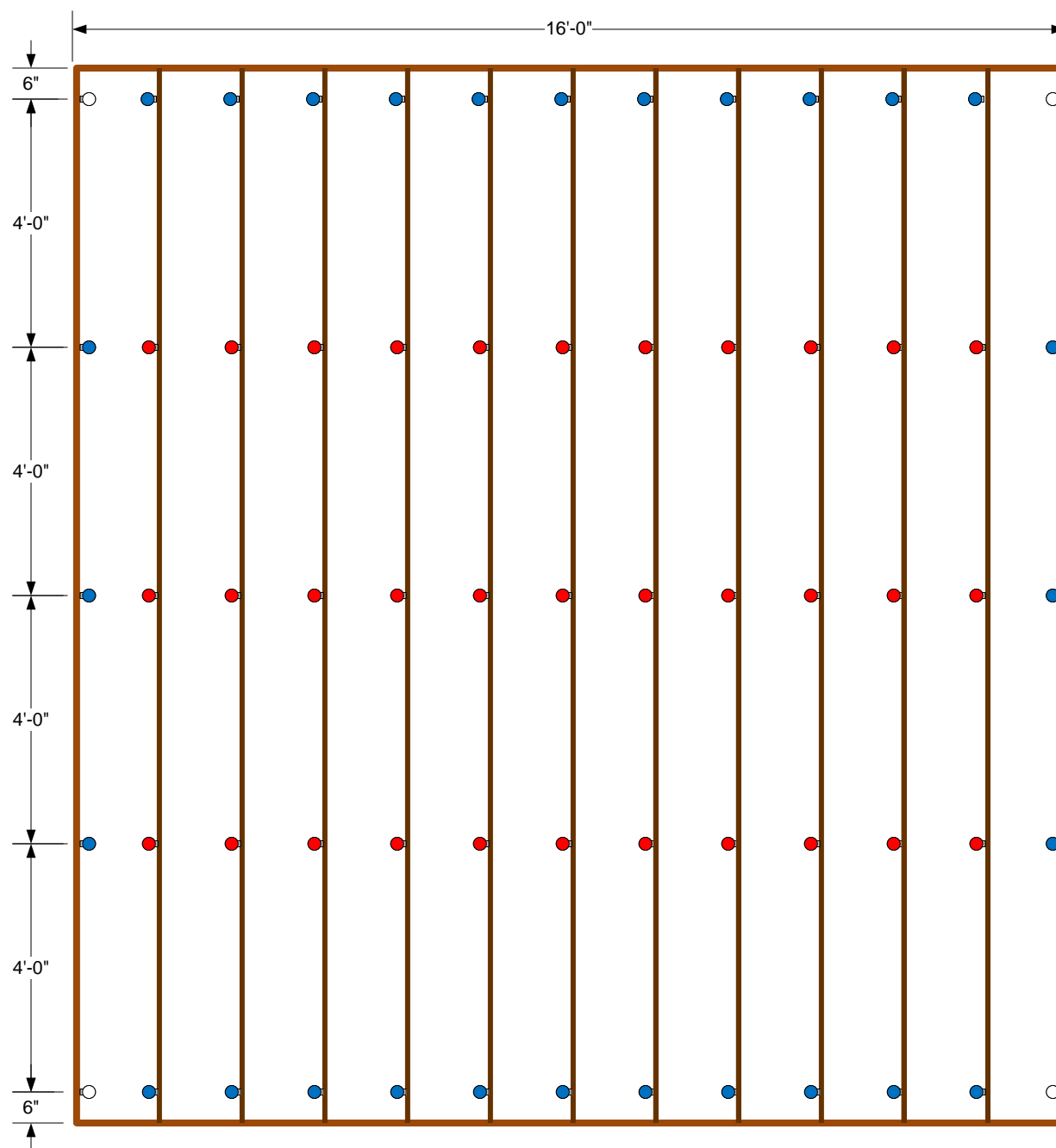
- Snap the drywall furring channel (hat track) into the RSIC-SI-X Low Profile.
- Install the RSIC Perimeter Tape 1/4" below the drywall furring channel around the entire perimeter of the room.
- Install the gypsum board to the drywall furring channel snug to the RSIC Perimeter tape around the perimeter of the entire ceiling.
- Caulk around the entire perimeter of the ceiling wall intersection.
- Use fire and smoke rated acoustical sealant where required.

## **General Information:**

- Resilient Sound Isolation Clip Spring Isolator RSIC-SI-X Low Profile Spring, furring channel (hat track) and gypsum board shall not carry heavy loads such as Projectors, HVAC Ducting, Curtains, etc.
- Splice furring channel (hat track) with 6 inch overlap in mid span, secure with 18 ga. tie wire or with two framing screws (7/16")
- Seal all potential air leaks with non-hardening acoustical caulking to achieve best noise control results. Use fire rated sealant where required.
- When attaching the RSIC-SI-X Low Profile Spring clips to a steel Joist the minimum allowable thickness is 20 ga. (0.030).
- When attaching plywood or other hard surface materials to 25 Gauge drywall furring channel use RSIC-Super Coarse screw

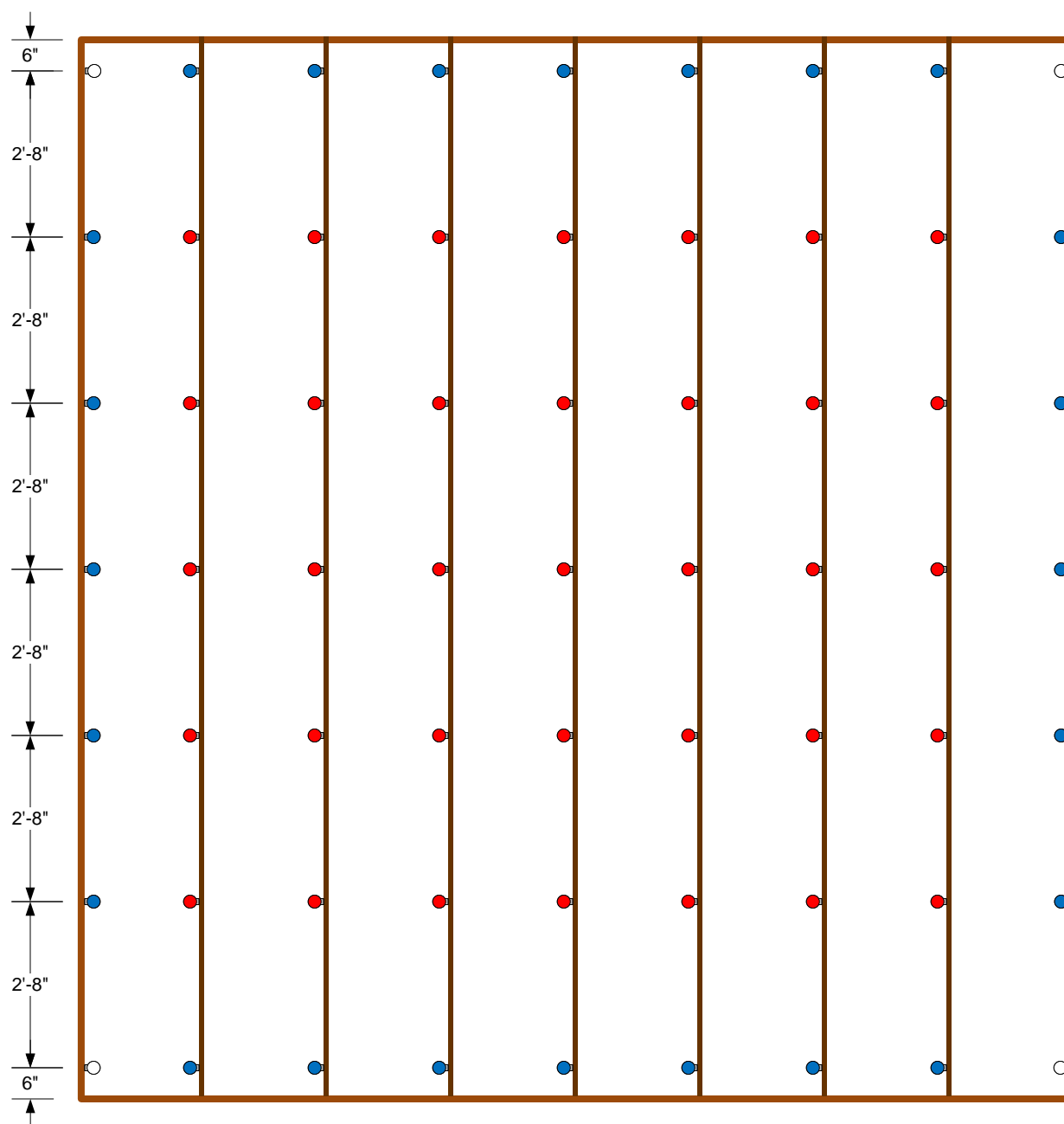
# RSIC-SI-X LOW PROFILE SOUND ISOLATION CLIP

## RSIC-SI-X LOW PROFILE SPRING INSTALLATION WITH FRAMING SPACED @ 16" OC. RSIC-SI-X LOW PROFILE @ 16" OC.



# RSIC-SI-X LOW PROFILE SOUND ISOLATION CLIP

## RSIC-SI-X LOW PROFILE SPRING INSTALLATION WITH FRAMING SPACED @ 24" OC. RSIC-SI-X LOW PROFILE @ 16" OC.







World Leader in  
Noise Control  
Solutions



LEED Analysis  
RSIC-SI-X Low Profile

### **Recycled Content**

PAC International's RSIC-SI-X Low Profile does not contain significant recycled content.

### **Fabrication Location**

The RSIC-SI-X Low Profile is manufactured in Canby, OR 97013

### **Material Source**

The extraction points for the materials in these products cannot be verified. Assume they are outside the 500 mile radius.



World Leader in  
Noise Control  
Solutions



RSIC-1 ®  
RSIC-SI-X  
RSIC-SI-X ADM  
RSIC-SI-X Low Profile  
RSIC-SI-X CRC  
RC-1 Boost ®  
PAC-RCB  
RSIC-SI-CRC2 LP  
RSIC-SI-1 Ultra  
RSIC-SI-CRC EZ  
RSIC-SI-WHI  
RSIC-SI-FF  
RSIC-1 EXT04  
RISC-1.5 CRC  
RSIC-1 Low Profile  
RSIC-1 Edge  
RSIC-1 TTC  
RSIC-1 Retro  
RSIC-1 Backer  
RSIC-1 ADM  
RSIC-U  
RSIC-U-HD  
RSIC-WFI  
RSIC-FGP  
RSIC-DC04  
RSIC-DC04 HD/DD  
RSIC-DC04X2  
RSIC-DC04X2 HD/DD  
RSIC-V  
RSIC-V Backer  
RSIC-2  
RSIC-CWB  
RSIC-CWB HD/DD  
RSIC-CWB HD/DD DC  
RSIC-Joist Isolator  
RSIC-GDS Kit  
RSIC-AMI  
RSIC-FS TV  
RSIC-Perimeter Tape  
RSIC Super Screw  
RSIC-Putty Pad  
RSIC-Multi Clip  
RSIC-FRC-HD  
PAC-IFB

## Safety Data Sheet

Article Statement

(PAC International, LLC Wall and Ceiling Isolation Products)

This document is provided for clarification of the Safety Data Sheets that you have requested for our product(s). OSHA Hazard Communication Standard requires a SDS for hazardous chemicals; however, the standard exempts all articles from the requirement. The explanation of an article is described per OSHA definition below.

*Pursuant to 29 CFR 1910.1200 (b) (6) (v) and (c), the product described herein is an “article” or is otherwise excluded from OSHA regulations requiring that a Material Safety Data Sheet be prepared for it.*

*An article defined: manufactured item other than a fluid or particle: (i) which is formed to a specific shape or design during manufacturing; (ii) which has an end use function (s) dependent in whole or in part upon its shape or design during end use; and (iii) which does not release, or other wise result in exposure to, a hazardous chemical under normal conditions of use.*

For technical information and additional resources covering these products please refer to PAC International published literature, e.g., data sheets, product drawings, and installation guidelines at [www.pac-intl.com](http://www.pac-intl.com)

As of the date of this document, the foregoing information is believed to be accurate and is provided in good faith to comply with applicable federal and state laws. However, no warranty or representation of law or fact, with respect to such information, is intended or given.



**World Leader in  
Noise Control  
Solutions**

RSIC-1 ®  
RSIC-SI-X  
RSIC-SI-X ADM  
RSIC-SI-X Low Profile  
RSIC-SI-X CRC  
RC-1 Boost ®  
PAC-RCB  
RSIC-SI-CRC2 LP  
RSIC-SI-1 Ultra  
RSIC-SI-CRC EZ  
RSIC-SI-WHI  
RSIC-SI-FF  
RSIC-1 EXT04  
RISC-1.5 CRC  
RSIC-1 Low Profile  
RSIC-1 Edge  
RSIC-1 TTC  
RSIC-1 Retro  
RSIC-1 Backer  
RSIC-1 ADM  
RSIC-U  
RSIC-U-HD  
RSIC-WFI  
RSIC-FGP  
RSIC-DC04  
RSIC-DC04 HD/DD  
RSIC-DC04X2  
RSIC-DC04X2 HD/DD  
RSIC-V  
RSIC-V Backer  
RSIC-2  
RSIC-2 Retro  
RSIC-CWB  
RSIC-CWB HD/DD  
RSIC-CWB HD/DD DC  
RSIC-Joist Isolator  
RSIC-GDS Kit  
RSIC-AMI  
RSIC-FS TV  
RSIC-Perimeter Tape  
RSIC Super Screw  
RSIC-Putty Pad  
RSIC-Multi Clip  
RSIC-FRC-HD  
PAC-IFB

## **RSIC ® Product Warranty Disclaimer**

### **WARRANTY DISCLAIMER AND LIABILITY LIMITATION LANGUAGE** **ONE YEAR WARRANTY**

Seller warrants to the original purchaser that its products are free from defects in material or workmanship for one year from the date of purchase from seller. Any allegedly defective product that is portable must be returned to seller prepaid. If upon examination it appears to the seller's satisfaction that the product is defective, seller shall repair, replace or return the purchase price of the product at seller's option.

EXCEPT FOR THE FORGOING, THERE IS NO WARRANTY, REPRESENTATION OR CONDITION OF ANY KIND; AND ANY OTHER WARRANTY, EXPRESS OR IMPLIED, IS EXCLUDED AND DISCLAIMED. Some states do not allow limitations on implied warranties, so the above limitation may not apply to you.

### **LIABILITY LIMITED TO RETURN OF PURCHASE PRICE**

IT IS AGREED THAT SELLER'S LIABILITY AND PURCHASER'S SOLE REMEDY, WHETHER IN CONTRACT, UNDER ANY WARRANTY, IN TORT (INCLUDING NEGLIGENCE), IN STRICT LIABILITY OR OTHERWISE, SHALL NOT EXCEED THE RETURN OF THE AMOUNT OF THE PURCHASE PRICE PAID BY PURCHASER, AND UNDER NO CIRCUMSTANCES SHALL SELLER BE LIABLE FOR ANY SPECIAL, INCIDENTAL OR CONSEQUENTIAL DAMAGES, INCLUDING, BUT NOT LIMITED TO, PERSONAL INJURY, PROPERTY DAMAGE, DAMAGE TO OR LOSS OF EQUIPMENT, LOST PROFITS OR REVENUE, COSTS OF RENTING REPLACEMENTS AND OTHER ADDITIONAL EXPENSES, EVEN IF SELLER HAS BEEN ADVISED OF THE POSSIBILITY OF SUCH DAMAGES. THE PRICE STATED FOR THE EQUIPMENT IS A CONSIDERATION IN LIMITING SELLER'S LIABILITY AND PURCHASER'S REMEDY. Some states do not allow the exclusion or limitation of incidental or consequential damages, so the above limitation or exclusion may not apply to you.

### **SELLER NOT LIABLE FOR PURCHASER'S NEGLIGENCE**

SELLER WILL NOT BE LIABLE FOR ANY DAMAGES, LOSSES OR EXPENSES AS A RESULT OF PURCHASER'S NEGLIGENCE, WHETHER DEEMED ACTIVE OR PASSIVE AND WHETHER OR NOT ANY SUCH NEGLIGENCE IS THE SOLE CAUSE OF ANY SUCH DAMAGE, LOSS OR EXPENSE.

### **MODEL FOR DEMONSTRATION PURPOSES ONLY**

THE MODEL OR SAMPLE SHOWN BY SELLER TO BUYER IS USED FOR DEMONSTRATION PURPOSES ONLY. THERE IS NO WARRANTY THAT THE GOODS AS DELIVERED SHALL CONFORM TO THE MODEL OR SAMPLE, AND CONFORMITY OF THE GOODS TO THE MODEL OR SAMPLE IS NOT PART OF THE BASIS OF THE BARGAIN BETWEEN SELLER AND BUYER.

### **NO WARRANTY OR COMPLIANCE WITH SAFETY CODE OR REGULATION**

SELLER DOES NOT WARRANT THAT ANY OF THE GOODS SOLD WILL MEET OR COMPLY WITH THE REQUIREMENTS OF ANY SAFETY CODE, BUILDING OR DWELLING CODE, OR REGULATION OF ANY STATE, MUNICIPALITY OR OTHER JURISDICTION.

### **NEVADA LAW APPLIES**

SELLER AND BUYER AGREE THAT ALL ASPECTS OF THIS TRANSACTION INCLUDING THE APPLICABLE STATUTE OF LIMITATIONS SHALL BE GOVERNED BY THE INTERNAL LAW OF THE STATE OR NEVADA, AND NOT THE LAWS OF CONFLICTS.

This warranty gives you specific legal rights, and you may also have other rights which vary from state to state