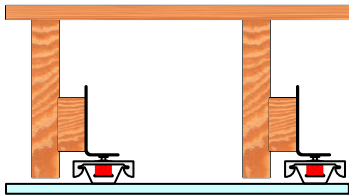


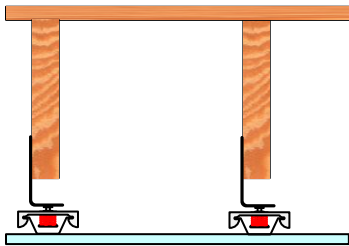


RSIC-SI-X EXT04

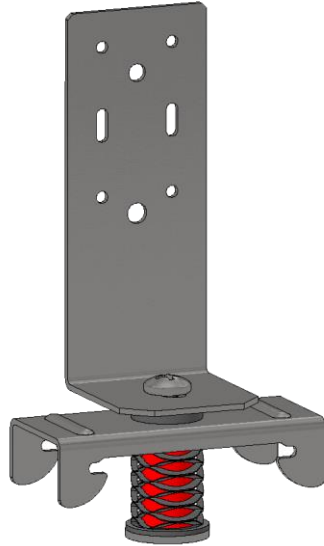
The RSIC-SI-X EXT04 is designed for use where an additional drop for HVAC, Plumbing, or Electrical Chases is needed. This clip gives you the flexibility to drop a ceiling as much as 4" from its original height. The RSIC-SI-X EXT04 is also used to level out uneven floor joists. This clip has proven to be very popular with the Home Theater industry. It creates a dropped ceiling, allowing an open chase for the new wires, all while retaining the superior acoustical performance of the RSIC clips.



Low Profile Installation



Dropped Ceiling Installation

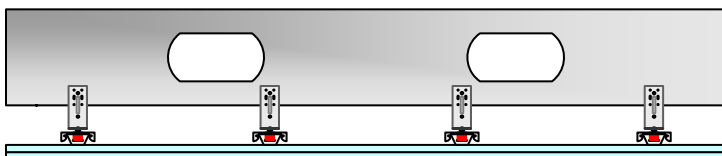
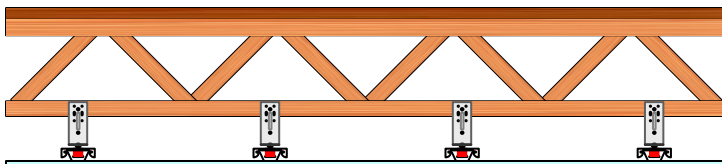
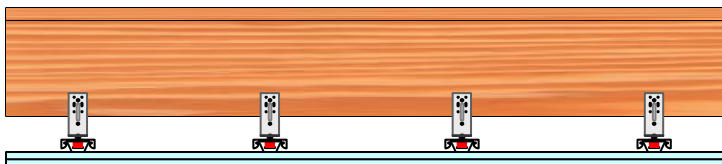


RSIC-SI-X EXT04, the High Performance, Noise control Solution

Concrete
Condo
Commercial

Apartment
Retail
Conference Rooms

Recording Studio
Home Theater
Commercial theater



RSIC-SI-X EXT04 specifications:

Acoustical design load:	7 - 26 Lbs
Total deflection	3/8"
Minimum Cavity Depth	1/2"
Cavity Max	4"
Adjustment limit	3-1/2"
Use in Ceilings	Yes
Use in New Construction	Yes
Use in Retrofit	No
Spring Isolation	Yes
Rubber Isolation	Yes
Pre-Calibrated	Yes
Pre-Assembled	Yes

Made, Tested, Engineered, Designed, and Calibrated In USA