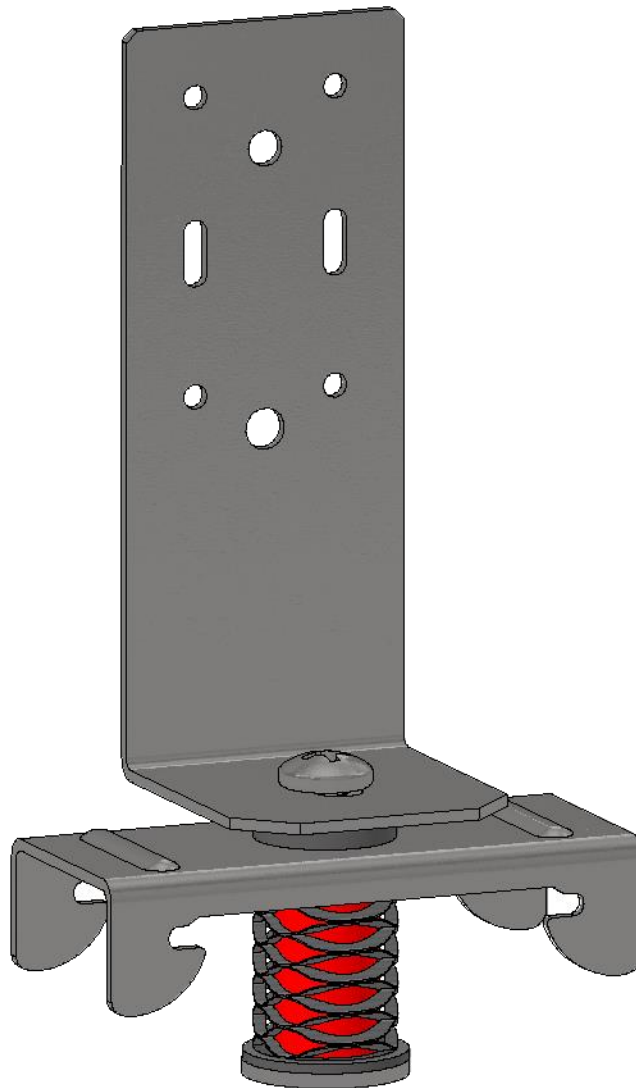


RSIC-SI-X EXT04 SOUND ISOLATION CLIP

RSIC-SI-X EXT04 INSTALLATION GUIDE

RSIC-SI-X EXT04

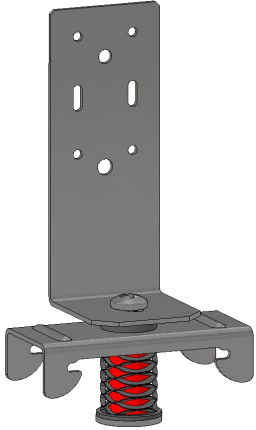


PAC International, LLC. Tel: (866) 774-2100 Web Site: www.PacInternationalLLC.com

© PAC International, LLC. All Rights Reserved. • (866) 774-2100 • Fax (866) 649-2710
RSIC® is a registered Trade Mark.

RSIC-SI-X EXT04 SOUND ISOLATION CLIP

RSIC-SI-X EXT04 INSTALLATION GUIDE

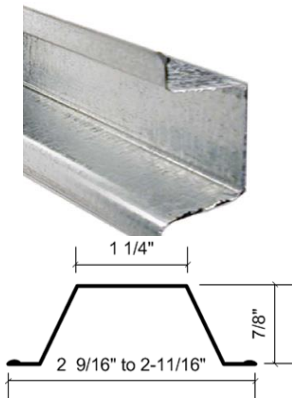


Resilient Sound Isolation Clip (RSIC-SI-X EXT04)

- Spacing: maximum 48" OC
- Maximum acoustical design load: 7 lbs, 13 lbs, and 26lbs

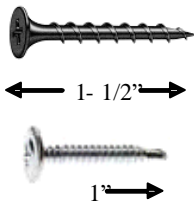
Furring Channel:

- Minimum requirements: 25 gauge, hemmed edge detail required on all 25 gauge furring channel. Meets or exceeds SSMA min. requirements.
- Optional: 22 Gauge (no hemmed edge required with 22 gauge)
- Depth: 7/8 inch
- Width Bottom: 2-9/16" to 2-11/16" inch wide nominal.
- Width Top: 1-1/4 inch wide
- Splice drywall furring channel (hat track) with 6 inch overlap in mid span (between two clip) secure with 18 Ga tie wire, or two 7/16" framing screws.



Fasteners:

- RSIC-SI-X EXT04 to wood: #8 x 1-1/2 inch minimum size coarse thread screw.
- RSIC-SI-X EXT04 to Steel: # 8 x 9/16" minimum size fine thread screw.
- DO NOT fasten Resilient Sound Isolation Clips (RSIC) to framing members with nails. Use only approved screws.



26 Lb

13 Lb

7 Lb

Resilient Sound Isolation Clip (RSIC-SI-X Spring)

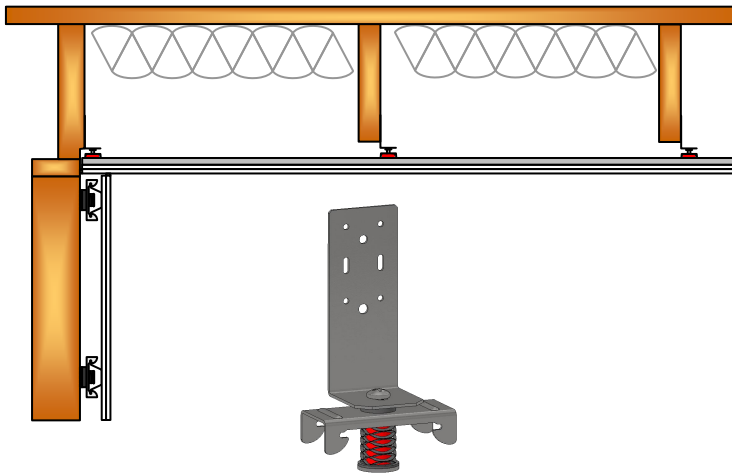
- **Maximum Spacing:** 48 inches on center
- **Design Load at 3/8" deflection from free height**
- **Red = 26 Lbs**
- **Blue = 13 Lbs**
- **White = 7 Lbs**

PAC International, LLC. Tel: (866) 774-2100 Web Site: www.PacInternationalLLC.com

© PAC International, LLC. All Rights Reserved. • (866) 774-2100 • Fax (866) 649-2710
RSIC® is a registered Trade Mark.

RSIC-SI-X EXT04 SOUND ISOLATION CLIP

RSIC-SI-X EXT04 INSTALLATION GUIDE



RSIC-SI-X EXT04

RSIC-SI-X EXT04 Clip with an up facing L bracket attaches to the side of the joist allowing the RSIC clip to be recessed into the joist cavity.

Ceilings:

- Resilient Sound Isolation Clips (RSIC-SI-X EXT04 Spring) maximum spacing 16" x 48" or 24" x 32" on center .
- Layout the RSIC-SI-X EXT04 Spring clips according to general guidelines represented in this installation manual.
- Any additional or non standard room dimensions need to be addressed.
- Verify the correct quantity of each RSIC-SI-X EXT04 Spring isolators (weight / color) is included in the shipment.
- Layout the RSIC-SI-X EXT04 Spring clips out on the floor (reflecting the ceiling above) Ensure there are no additional items required to complete the installation.
 - Red 26 Lb clips are for the field
 - Blue 13 Lb clips are for the field, edge.
 - White 7 Lb clips are for edge, corner, and or infill where additional support is needed
- Fasten the Resilient Sound Isolation Clip (RSIC-SI-X EXT04 Springs) to the structure with fasteners approved for a minimum pull-out and shear of 100 lbs. Allowing for up to 3/8" deflection after the gypsum board has been installed.
- Using a laser level, or tape measure fasten all of the RSIC-SI-X EXT04 clips to the side of joist ensuring all the RSIC-SI-X EXT04 clips are in the same level. Height can only be adjusted by the position of the fasteners into the joist.
- Ensure all RSIC EXT04 clips are securely fastened to the structure with a minimum #8 x 1-1/2" long screw for wood framed systems
- At the perimeter, the distance between the wall and first support for the drywall shall be less than 8".
- Variances in the field may require additional adjustment to ensure a consistent system. (see field calibration guide)
- When attaching plywood or other hard surface materials to light gauge drywall furring channel use RSIC-Super Coarse screw

PAC International, LLC. Tel: (866) 774-2100 Web Site: www.PACInternationalLLC.com

©2024 PAC International, LLC. All Rights Reserved. • (866) 774-2100 RSIC® is a registered Trade Mark

RSIC-SI-X EXT04 SOUND ISOLATION CLIP

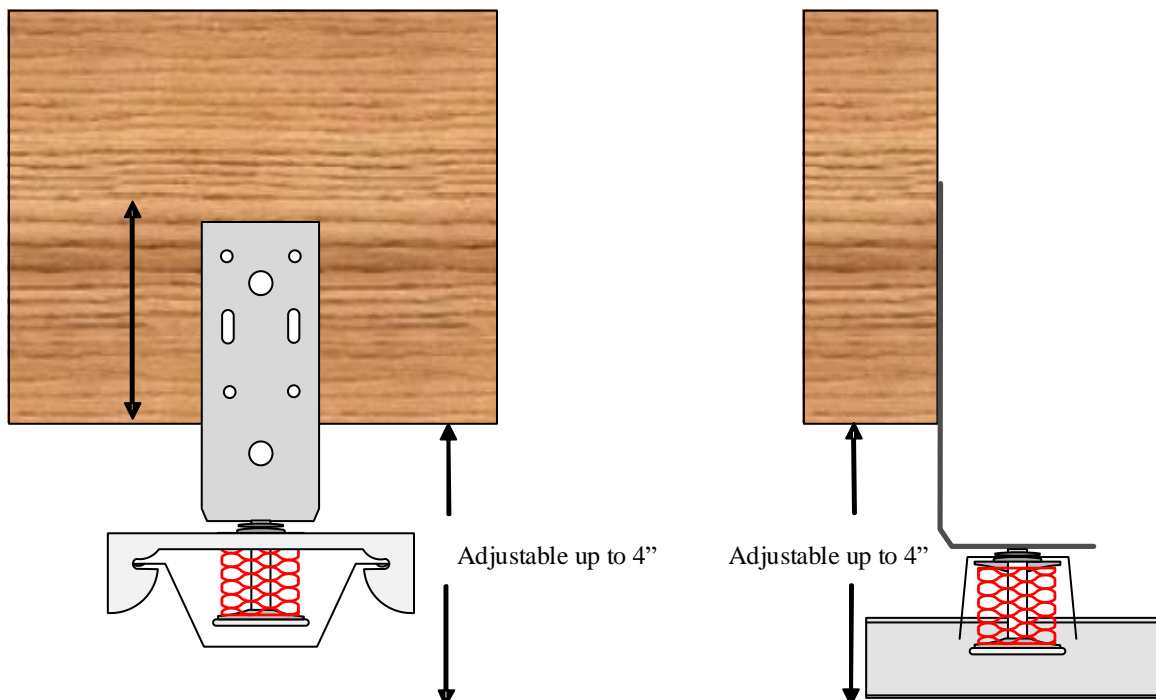
RSIC-SI-X EXT04 INSTALLATION GUIDE

General Information:

- Resilient Sound Isolation Clip (RSIC-SI-X EXT04), Furring Channel (hat track) and Gypsum board shall not carry heavy loads such as cabinets or bookshelves
- Splice furring channel (hat track) with 6 inch overlap in mid span, secure with 18 Ga. Tie wire or with two framing screws (7/16")
- Seal all potential air leaks with non-hardening acoustical caulking to achieve best noise control results. Use fire rated sealant where required.

Spring Height before gypsum board is installed.

Spring Height after gypsum board is installed.



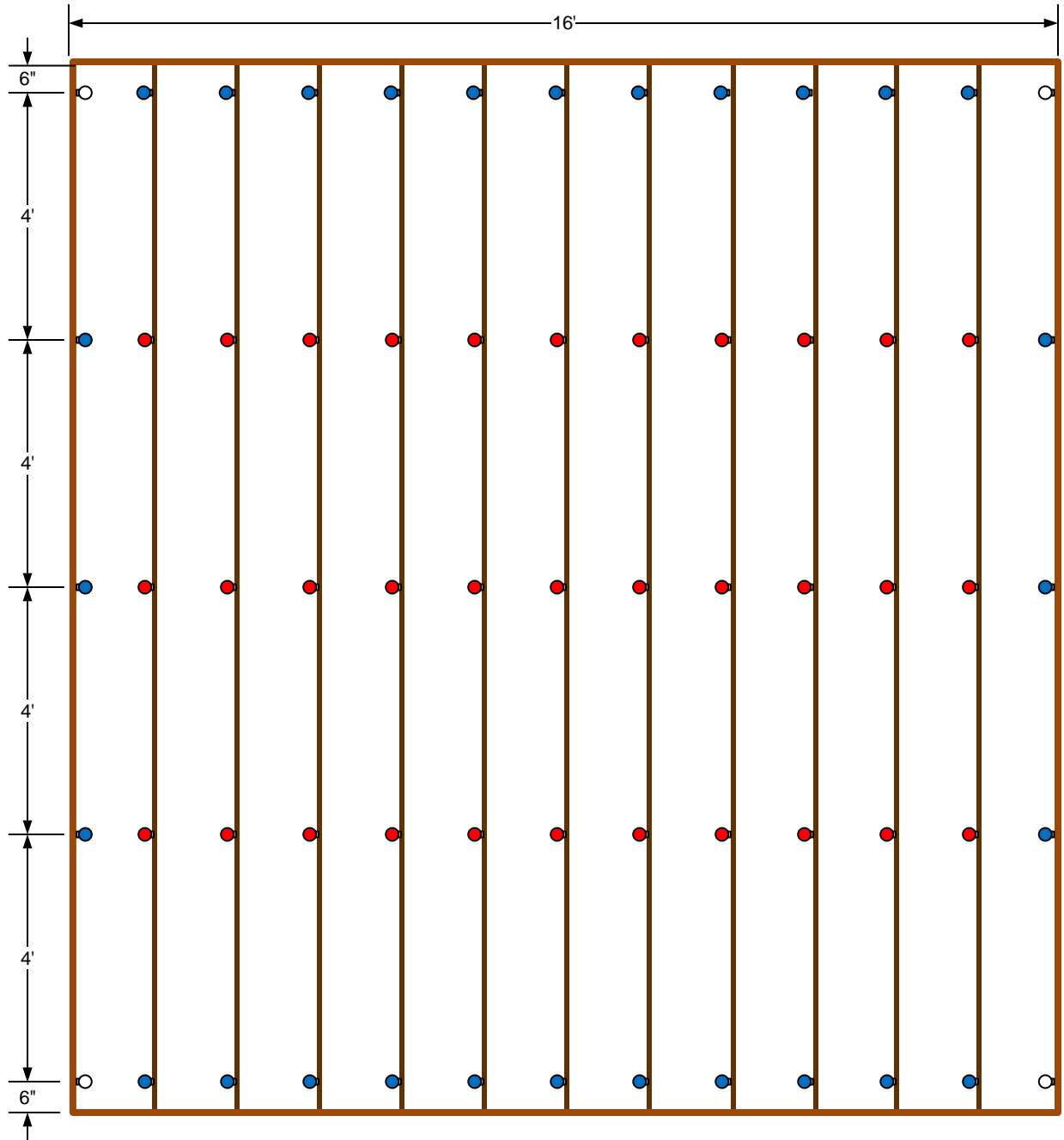
PAC International, LLC. Tel: (866) 774-2100 Web Site: www.PacInternationalLLC.com

© PAC International, LLC. All Rights Reserved. • (866) 774-2100 • Fax (866) 649-2710

RSIC® is a registered Trade Mark.

RSIC-SI-X EXT04 SOUND ISOLATION CLIP

RSIC-SI-X EXT04 SPRING
INSTALLATION WITH FRAMING SPACED @ 16" OC.
RSIC-SI-X EXT04 @ 16" OC.



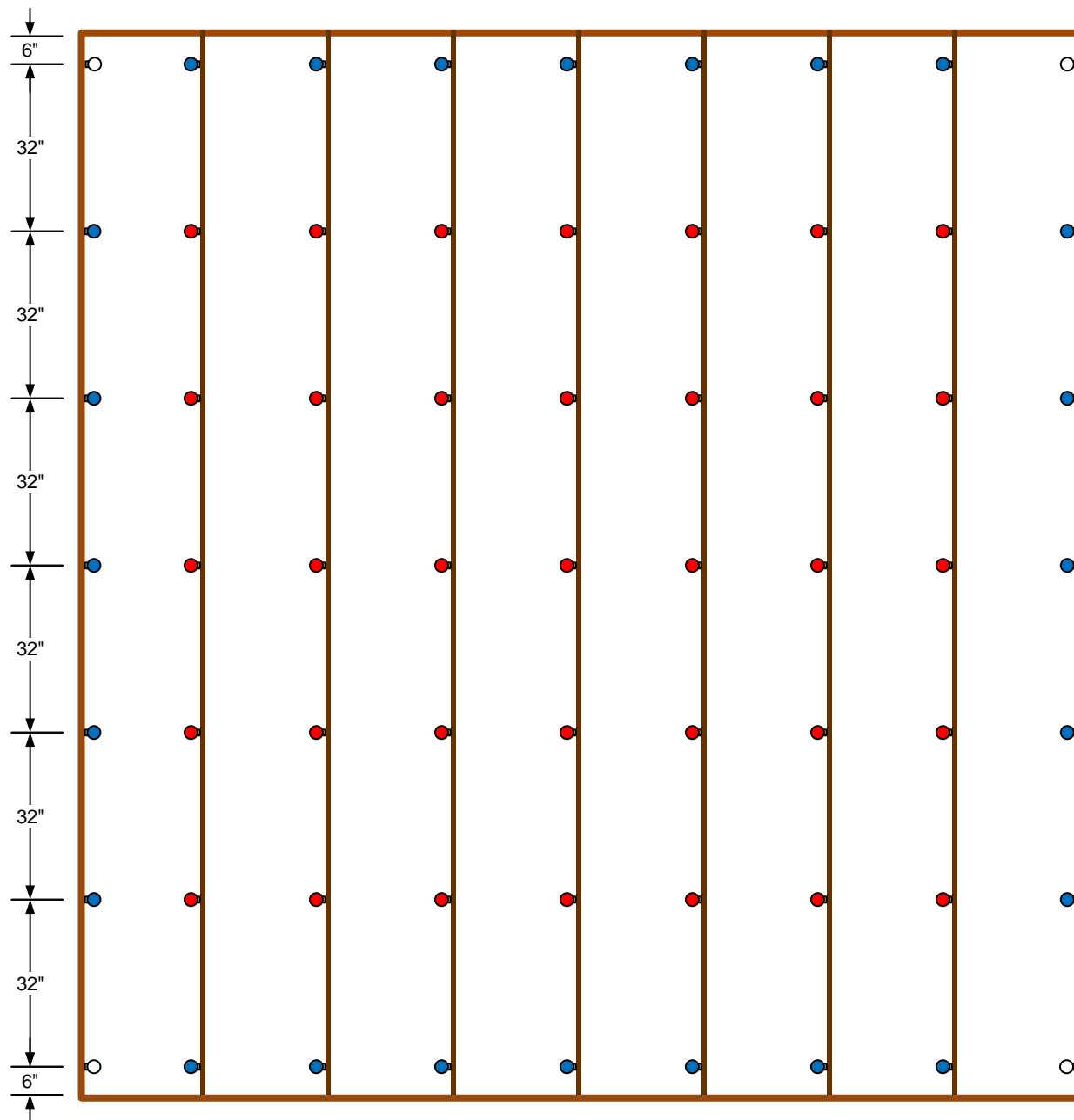
PAC International, LLC. Tel: (866) 774-2100 Web Site: www.PacInternationalLLC.com

© PAC International, LLC. All Rights Reserved. • (866) 774-2100 • Fax (866) 649-2710

RSIC® is a registered Trade Mark.

RSIC-SI-X EXT04 SOUND ISOLATION CLIP

**RSIC-SI-X EXT04 SPRING
INSTALLATION WITH FRAMING SPACED @ 24" OC.
RSIC-SI-X EXT04 @ 16" OC.**



PAC International, LLC. Tel: (866) 774-2100 Web Site: www.pac-intl.com

© PAC International, LLC. All Rights Reserved. • (866) 774-2100 • Fax (866) 649-2710
RSIC® is a registered Trade Mark.