

# **RSIC-SI-X CRC SOUND ISOLATION CLIP**

**RSIC-SI-X CRC INSTALLATION GUIDE**

# **RSIC-SI-X CRC**

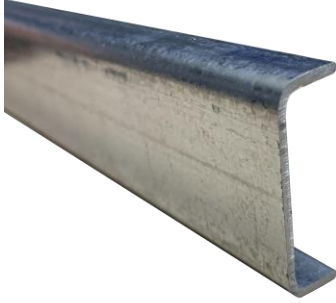


**SHIPPED FULLY  
ASSEMBLED  
AND CALIBRATED**

**PAC International, Inc. Tel: (866) 774-2100 Web Site: [www.PACInternationalLLC.com](http://www.PACInternationalLLC.com)**

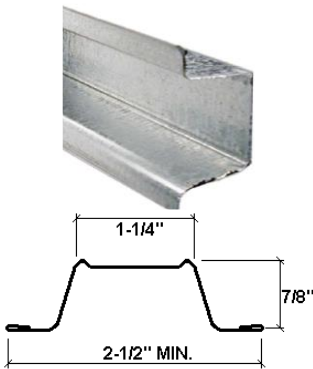
©2024 PAC International, LLC. All Rights Reserved. • (866) 774-2100 RSIC® is a registered Trade Mark

# RSIC-SI-X CRC SOUND ISOLATION CLIP



## Cold Rolled Channel:

- **Minimum requirements:** 16 gauge 1.5" wide. Meets or exceeds SSMA min. requirements.
- **Depth:** 1/2 inch
- **Width:** 1-1/2 inch wide minimum.



## Drywall Furring Channel:

- **Minimum Requirements:** 25 gauge, hemmed edge detail required on all 25 gauge furring channel. Meets or exceeds SSMA requirements.
- **Depth:** 7/8 inch
- **Width Bottom:** 2-1/2 inch wide minimum.
- **Width Top:** 1-1/4 inch wide

Splice drywall furring channel (hat track) with 6 inch overlap in mid span (between two clips) secure with 18 ga tie wire, or two 7/16" framing screws.



## Resilient Sound Isolation Clip (RSIC-SI-X CRC)

- Spacing: maximum 16 inches on center
- Maximum acoustical design load: 7 lbs to 26lbs
- RSIC-CRC clip is designed for use with any joist or concrete application where a dropped drywall ceiling is required.

26 Lb

13 Lb

7 Lb

## Resilient Sound Isolation Clip (RSIC-SI-X Spring)

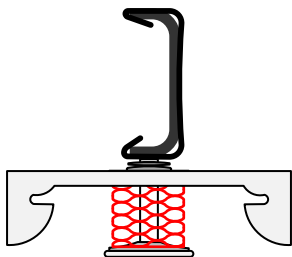
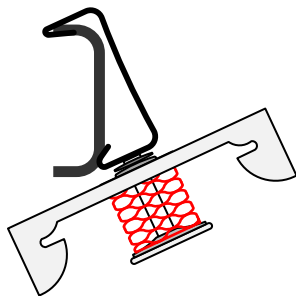
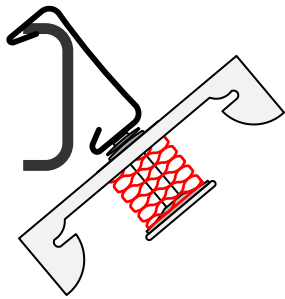
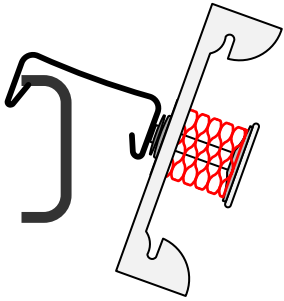
- **Maximum Spacing:** 48 inches on center
- **Design Load at 3/8" deflection from free height**
- **Red = 26 Lbs**
- **Blue = 13 Lbs**
- **White = 7 Lbs**

PAC International, LLC. Tel: (866) 774-2100 Web Site: [www.PACInternationalLLC.com](http://www.PACInternationalLLC.com)

©2024 PAC International, LLC. All Rights Reserved. • (866) 774-2100 RSIC® is a registered Trade Mark

# RSIC-SI-X CRC SOUND ISOLATION CLIP

## RSIC-SI-X CRC INSTALLATION GUIDE



### Ceilings:

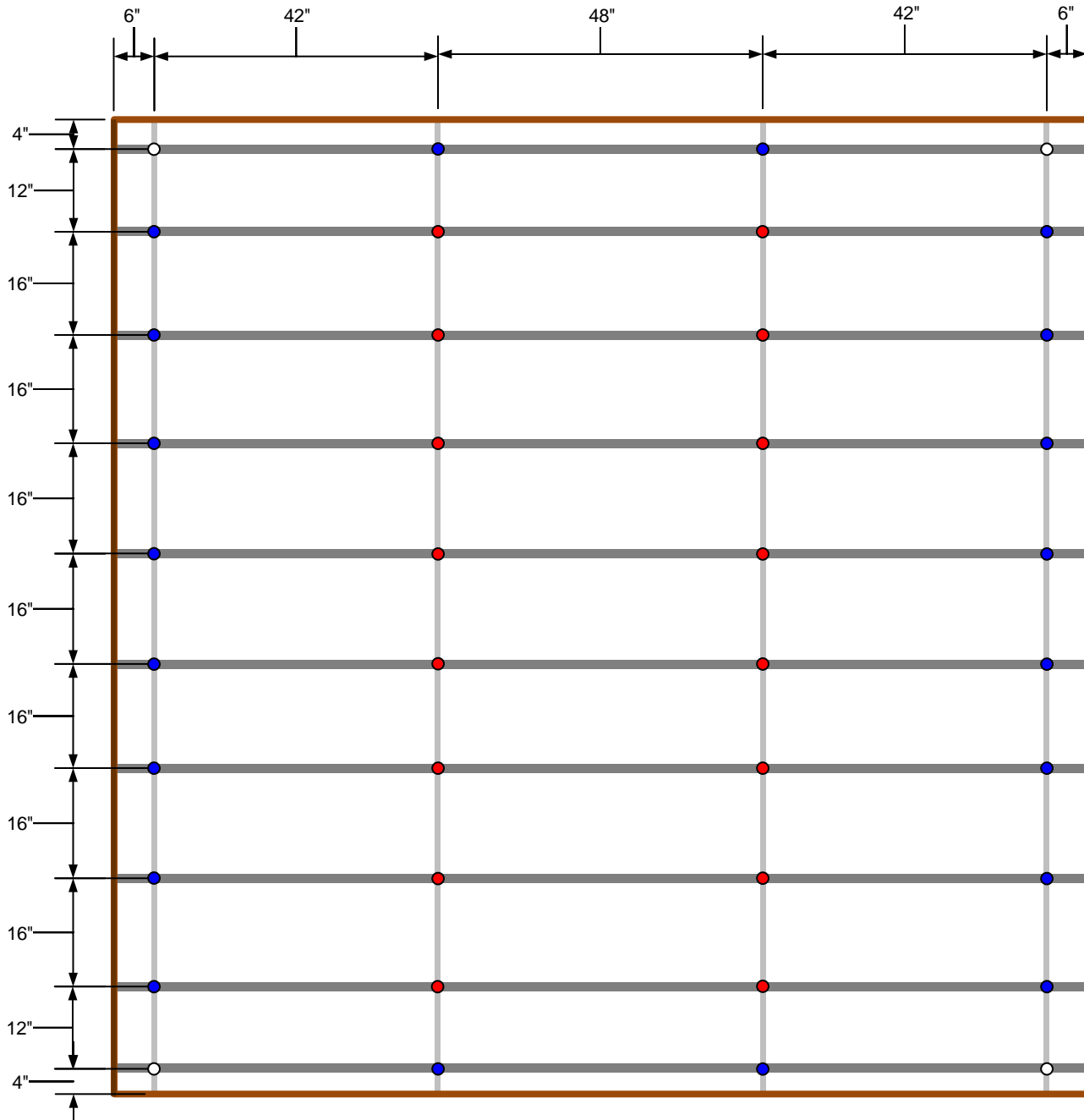
- Resilient Sound Isolation Clips (RSIC-SI-X CRC Spring) maximum spacing 16" x 48" on center .
- Layout the RSIC-SI-X CRC Spring clips according to general guidelines represented in this installation manual.
- Any additional or non standard room dimensions need to be addressed by a professional engineer.
- Verify the correct quantity of each RSIC-SI-X CRC Spring isolators (weight / color) is included in the shipment.
- Layout the RSIC-SI-X CRC Spring clips out on the floor (reflecting the ceiling above) Ensure there are no additional items required to complete the installation.
- Red 26 Lb clips are for the field
- Blue 13 Lb clips are for the field, edge.
- White 7 Lb clips are for edge, corner, and or infill where additional support is needed
- Connect the Resilient Sound Isolation Clip (RSIC-SI-X CRC) to the cold rolled channel
- Ensure the RSIC-SI-X CRC clips are tight to the cold rolled channel
- Snap in the drywall furring channel (hat track) into the RSIC-SI-X CRC clips
- Install the gypsum board to the drywall furring channel leaving a ¼" min. gap around the perimeter of the ceiling
- Caulk around the perimeter of the ceiling. Use fire and smoke rated acoustical caulking where required

### General Information:

- Resilient Sound Isolation Clip (RSIC-SI-X CRC), furring channel (hat track) and gypsum board shall not carry heavy loads such as cabinets or bookshelves.
- Splice furring channel (hat track) with 6 inch overlap in mid span, secure with 18 ga. tie wire or with two framing screws (7/16")
- Seal all potential air leaks with non-hardening acoustical caulking to achieve best noise control results. Use fire rated sealant where required.

# RSIC-SI-X CRC SOUND ISOLATION CLIP

## RSIC-SI-X CRC SPRING INSTALLATION WITH CRC FRAMING SPACED @ 48" OC. RSIC-SI-X CRC @ 16" OC.



PAC International, LLC. Tel: (866) 774-2100 Web Site: [www.PACInternationalLLC.com](http://www.PACInternationalLLC.com)

©2024 PAC International, LLC. All Rights Reserved. • (866) 774-2100 RSIC® is a registered Trade Mark