



### RSIC-SI-1 ULTRA



The RSIC SI-1 Ultra is designed for use with any wood framed, steel framed, or concrete ceiling system where noise control is needed.

The RSIC-1 assembly decouples and isolates the gypsum board or plywood from the structure increasing the acoustical performance of the system. With an Acoustical design load range from 5 lbs to 40 lbs per isolator, the RSIC-SI-1 Ultra clip can support up to two layers of 5/8" gypsum board when spaced at 24" x 48" oc. For heavier systems increase the number of isolators to support the additional weight of the system. The RSIC-SI-1 Ultra clip fastens directly to the framing or structure creating an air cavity between the face of the framing and the back of the gypsum board. The RSIC-SI-1 Ultra stops the noise and vibrations that typically would be allowed to transfer through the structure.

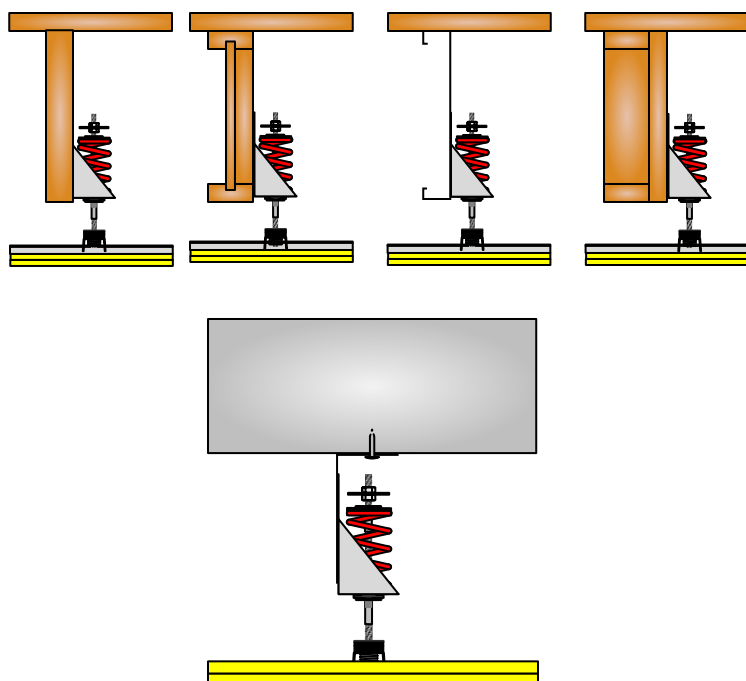
|       |
|-------|
| Wood  |
| Steel |

|            |
|------------|
| Gymnasium  |
| Condo      |
| Commercial |

|                  |
|------------------|
| Apartment        |
| Retail           |
| Conference Rooms |

|                    |
|--------------------|
| Recording Studio   |
| Home Theater       |
| Commercial theater |

#### RSIC-SI-1 Ultra specifications:



|   |               |
|---|---------------|
| Acoustical design load:                                   | 7 lb to 25 lb |
| Total deflection  | 0.5"          |
| Double deflection   | YES           |
| Adjustable  | NO            |
| Cavity min  | 2" nom        |
| Cavity Max  | 2" nom        |
| Adjustment limit  | 0"            |
| Use on Ceilings   | YES           |
| New Construction  | YES           |
| Retro Fit   | YES           |
| Spring Isolation  | Yes           |
| Rubber Isolation  | Yes           |
| Pre-Calibrated  | Yes           |
| Pre-Assembled   | Yes           |
| Made, Tested, Engineered, Designed, and Calibrated In USA |               |

PAC International, LLC.  
7260 W Azure Dr 140-213  
Las Vegas, NV 89130  
Toll Free (866) RSIC-100 (866) 774-2100  
Fax (866) 649-2710  
Web Site www.pac-intl.com  
E-Mail info@pac-intl.com

## **RSIC-SI-1 ULTRA Product Guide Specification**

Specifier Notes: This product guide specification is written according to the Construction Specifications Institute (CSI) 3-Part Format, including *MasterFormat*, *SectionFormat*, and *PageFormat*, contained in the *CSI Manual of Practice*.

The section must be carefully reviewed and edited by the Architect to meet the requirements of the project and local building code. Coordinate this section with other specification sections and the drawings.

Delete all "Specifier Notes" when editing this section.

### **SECTION 13085**

#### **SOUND ISOLATION**

Specifier Notes: This section covers PAC International, Inc. "RSIC-SI-1 ULTRA" Resilient Sound Isolation Clip installed with drywall furring channels for support of gypsum board for acoustical separation (de-coupling) in ceilings. Consult PAC International for assistance in editing this section for the specific application.

#### **PART 1 GENERAL**

##### **1.1 SECTION INCLUDES**

- A. Resilient sound isolation clips installed with drywall furring channels for support of gypsum board for noise control (de-coupling) in ceilings.

##### **1.2 RELATED SECTIONS**

Specifier Notes: Edit the following list of related sections as required for the project. List other sections with work directly related to this section.

- A. Section 05400 - Cold-Formed Metal Framing.

- B. Section 06110 - Wood Framing.
- C. Section 07210 - Building Insulation.
- D. Section 07920 - Joint Sealants.
- E. Section 09110 - Non-Load-Bearing Wall Framing.
- F. Section 09250 - Gypsum Board.
- G. Section 09260 - Gypsum Board Assemblies.
- H. Section 09820 - Acoustical Insulation and Sealants.

### 1.3 REFERENCES

Specifier Notes: List standards referenced in this section, complete with designations and titles. This article does not require compliance with standards, but is merely a listing of those used.

- A. AISI Specifications for Design of Cold-Formed Steel Structural Members.
- B. ASTM B 633 - Standard Specification for Electrodeposited Coatings of Zinc on Iron and Steel.
- C. ASTM C 645 - Standard Specification for Nonstructural Steel Framing Members.
- D. ASTM C 754 - Standard Specification for Installation of Steel Framing Members to Receive Screw-Attached Gypsum Panel Products.
- E. ASTM C 840 - Standard Specification for Application and Finishing of Gypsum Board.
- F. ASTM C 1002 - Standard Specification for Steel Self-Piercing Tapping Screws for the Application of Gypsum Panel Products or Metal Plaster Bases to Wood Studs or Steel Studs.
- G. ASTM D 412 - Standard Test Methods for Vulcanized Rubber and Thermoplastic Elastomers - Tension.
- H. ASTM D 573 - Standard Test Method for Rubber-Deterioration in an Air Oven.
- I. ASTM D 2000 - Standard Classification System for Rubber Products in Automotive Applications.
- J. ASTM D 2240 - Standard Test Method for Rubber Property - Durometer Hardness.

## 1.4 DESIGN REQUIREMENTS

Specifier Notes: The "RSIC-SI-1 ULTRA" Resilient Sound Isolation Clip acoustic assembly is a proprietary product used for fastening gypsum board to a supporting structure, while simultaneously isolating it from vibration. This significantly reduces the amount of impact and airborne sound filtering from rooms above, below, and alongside.

To maximize the noise control capacity and potential of the RSIC-SI-1 ULTRA, a professional acoustical engineer should be consulted. PAC International offers computer modeling for STC to assist in your design.

- A. Dead or Shear Load: Maximum design load specified by the spring load rating.  
(5 lb ~ 40 lb)

## 1.5 SUBMITTALS

- A. Comply with Section 01330 - Submittal Procedures.
- B. Product Data: Submit manufacturer's product data and installation instructions.
  - 1. Resilient sound isolation clips.
  - 2. Drywall furring channels.
- C. Samples: Submit manufacturer's samples.
  - 1. Resilient sound isolation clips.
  - 2. Drywall furring channels.
- D. Warranty: Submit manufacturer's standard warranty for resilient sound isolation clips.

## 1.6 DELIVERY, STORAGE, AND HANDLING

- A. Delivery: Deliver materials to site in manufacturer's original, unopened containers and packaging, with labels clearly identifying product name and manufacturer.
- B. Storage: Store materials in clean, dry area indoors in accordance with manufacturer's instructions.
- C. Handling: Protect materials during handling and installation to prevent damage.

## PART 2 PRODUCTS

### 2.1 SOUND ISOLATION

- A. Sound Isolation Clips: Resilient Sound Isolation Clip (RSIC-SI-1 ULTRA).

RSIC-1

13085 - 3

1. Manufacturer: PAC International, LLC., Las Vegas, NV. Toll Free (866) RSIC-100 (866) 774-2100. Phone (503) 649-7700. Fax (503) 649-2710. Web Site [www.pac-intl.com](http://www.pac-intl.com). E-Mail [info@pac-intl.com](mailto:info@pac-intl.com).
2. Rubber Isolator:
  - a. Natural virgin and recycled organic rubber compound, blended with fire-inhibiting compounds.
  - d. Manufactured to ASTM D 2000, M2 AA 510 A13, which includes:
    - 1) Hardness, ASTM D 2240, Shore A: 47.
    - 2) Modulus 300 Percent, ASTM D 412, Die C: 5.3 MPa.
    - 3) Tensile Strength, ASTM D 412, Die C: 11.2 MPa.
    - 4) Elongation at Break, ASTM D 573: 454 percent.
3. Clip: Galvanized or aluminum-zinc coated steel, 18 gauge.
4. Ferrule: Zinc-electroplated steel.
5. Spring: Color coded to specified load ratings. Each load rating designed with 1/2" deflection when loaded to specified rating.
5. Drop: Ceiling height specified by the combination of thread length below RSIC-SI-1 ULTRA clip and spacing of drywall furring channel guide.

Specifier Notes: The following materials are not furnished by PAC International.

B. Drywall Furring Channels (Hat Track):

1. Material: Cold-formed galvanized steel.
2. Conformance:
  - a. AISI Specifications for Design of Cold-Formed Steel Structural Members.
  - b. ASTM C 645.
  - c. ASTM C 754.
3. Designation: Steel Stud Manufacturers Association (SSMA) Code 087F125-18 (25 gauge).
  - a. Size: 0.0179 inch (0.53 mm) thick, 7/8 inch (22.2 mm) height, 2-9/16 inches to 2-11/16 inches (65.1 mm to 68 mm) width.
  - b. Hemmed edge detail.

C. Mechanical Fasteners:

1. Type: Self-drilling, self-tapping screws. Steel, ASTM C 1002. Galvanized coating, plated, or oil-phosphate coated, ASTM B 633, as needed for required corrosion resistance.
2. Resilient Sound Isolation Clip Connections:
  - a. To Wood Framing Members: Two screws 1-1/2 inches (36 mm) minimum length, #8 minimum shank, Type W (course thread), bugle- or hex-head screws of equal or greater size.
    - 1) Minimum allowable Pullout and Shear: 80 pounds.
  - b. To Steel Framing Members (20 Gauge through 12 Gauge): Screws 1 inch (25 mm) minimum length; #8 minimum shank; Type S (fine thread); self-drilling tip; bugle-, wafer-, or hex-head screws of equal or greater size.
    - 1) Minimum allowable Pullout and Shear: 80 pounds.

- 3. Drywall Furring Channel Lap Joint Connection, Steel to Steel: Framing screws, button head, 7/16 inch (11 mm) minimum length, #6 minimum shank, needle point, Phillips drive or greater, or double-wire tie with 18 gauge tie wire.
- D. Tie Wire: 18 gauge, annealed, galvanized steel.
- E. Acoustical Sealant: Flexible, non-hardening. As specified in Section 07920.
- F. Putty Pad Sealant: Control noise transmission at electrical boxes and other penetrations. As specified in Section 07920.

## **PART 3 EXECUTION**

### **3.1 EXAMINATION**

- A. Examine areas to receive materials. Notify Architect if areas are not acceptable. Do not begin installation until unacceptable conditions have been corrected.

### **3.2 INSTALLATION - GENERAL**

- A. Install resilient sound isolation clips and drywall furring channels in accordance with manufacturer's instructions.
- B. Mechanically fasten resilient sound isolation clips to structure with screws, dependent upon structure.
- C. Fire-Resistive Design Assemblies:
  - 1. Do not arbitrarily add resilient sound isolation clips to fire-rated assemblies.
  - 2. Verify UL Fire Resistive assemblies with manufacturer, or at [www.UL.com](http://www.UL.com)
- D. Space resilient sound isolation clips at manufacturers recommendation through PAC International, Inc. design center for ceilings.
- E. Do not exceed design load as specified by spring rating for each isolation clip.
- G. Splicing Drywall Furring Channels:
  - 1. Splice drywall furring channels with minimum of 6-inch (150-mm) laps.
  - 2. Secure laps with 2 framing screws or 18 gauge tie wire double wrapped.
  - 3. Locate splices between resilient sound isolation clips.
  - 4. Do not locate splices on resilient sound isolation clips.
- H. Flanking Noise:
  - 1. Review installation details to prevent structure-borne flanking noise.
  - 2. Do not allow drywall furring channels or gypsum board to contact foreign materials, including floors, ceilings, or wall framing members.
- I. Gypsum Board:
  - 1. Install gypsum board with 1/8-inch (3-mm) to 1/4-inch (6-mm) gap around perimeter for acoustical sealant application.

2. Install gypsum board in accordance with ASTM C 840 as specified in Section 09250.

J. Wall Ceiling Intersection

1. Insert Perimeter gasket material or acoustical caulking at intersection of wall and ceiling systems to ensure perimeter of
2. Seal electrical outlets and penetrations with acoustical sealant.

K. Acoustical Sealant:

1. Seal potential air leaks with acoustical sealant to achieve best Field Sound Transmission

L. Putty Pad Sealant: Acoustically seal with putty pads, electrical boxes in walls and ceilings in which resilient sound isolation clips are used.

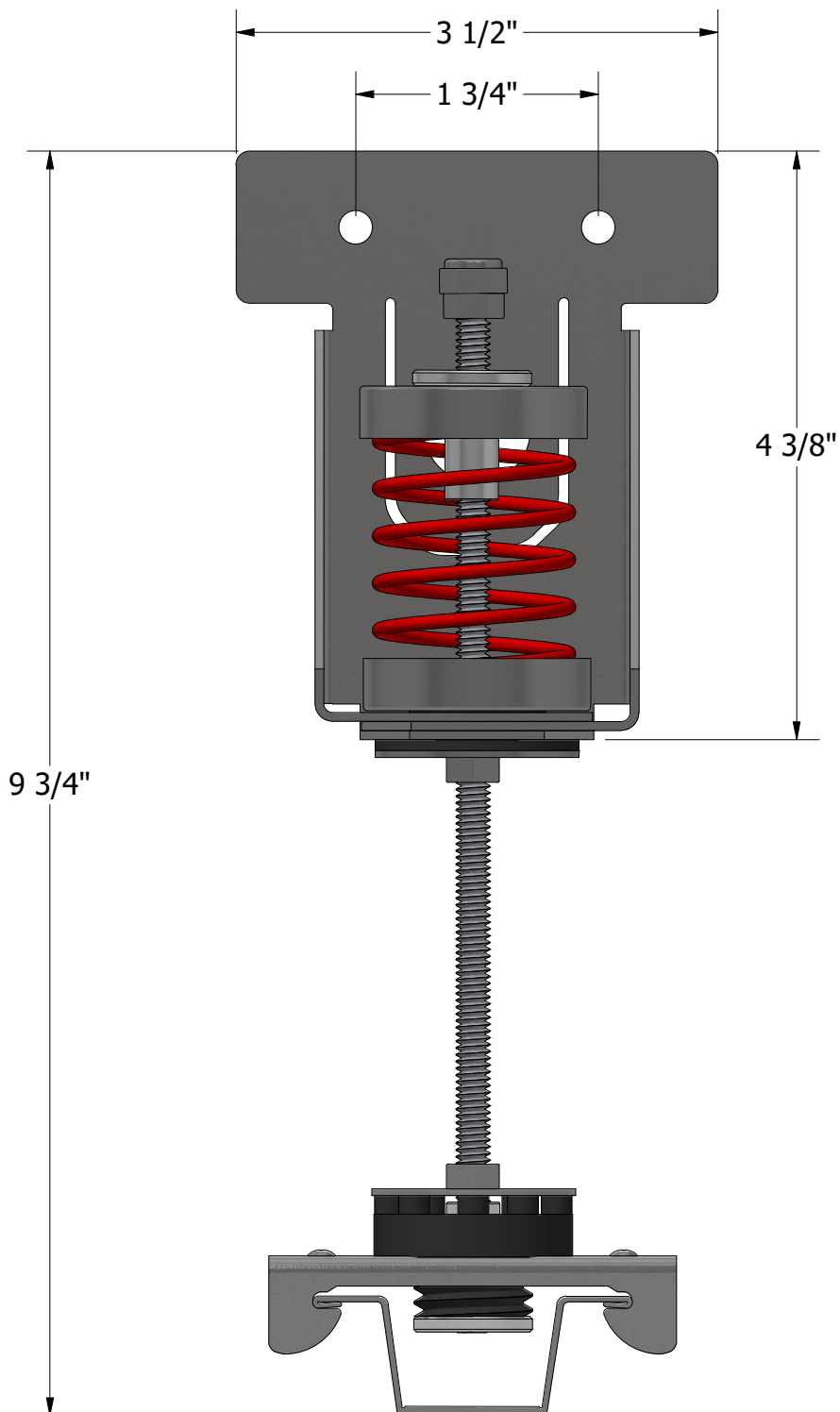
### 3.2 INSTALLATION - CEILINGS

Specifier Notes: Special consideration should be given to all penetrations, such as recessed light fixtures, electrical boxes, exhaust fans, and sprinkler heads to ensure the control of both STC and IIC noise transfer. Consult PAC International or an acoustical engineer for additional information.

- A. Install drywall furring channels perpendicular, parallel, or angular to framing members.
- B. Space Drywall Furring Channels:
  1. Maximum of 24 inches (600 mm) on center with:
    - a. Single layer of 5/8-inch (16-mm) gypsum board.
    - b. Double layer of 5/8-inch (16-mm) gypsum board, weighing less than 2.25 pounds per square foot per layer.
    - c. Single layer of 1/2-inch (12-mm) high-strength gypsum board.
    - d. Double layer of 1/2-inch (12-mm) high-strength gypsum board.
  2. Maximum of 16 inches (400 mm) on center with:
    - a. Double layer of 5/8-inch (16-mm) gypsum board.
    - b. Single layer of 1/2-inch (12-mm) regular-strength gypsum board.
    - c. Double layer of 1/2-inch (12-mm) regular-strength gypsum board.
  3. Reduce spacing of drywall furring channels to prevent potential for sagging of gypsum board or when additional loads are supported by resilient sound isolation clips.
- C. Locate resilient sound isolation clips maximum of 8 inches (200 mm) from ends of drywall furring channels.
- D. Locate drywall furring channels maximum of 3 inches (75 mm) from parallel wall assemblies.

### END OF SECTION

# RSIC-SI-1 Ultra Loaded Height



Measurements +/- 1/16"

RSIC-SI-1  
Loaded

2/1/2023

SCALE

3/4

**PAC**  
International

World Leader in  
Noise Control  
Solutions





# **RSIC-SI-1 ULTRA**

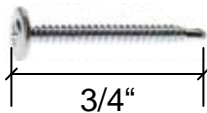
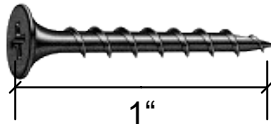
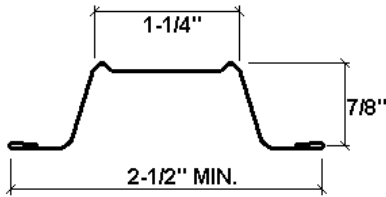


**SHIPPED FULLY  
ASSEMBLED  
AND CALIBRATED**

**PAC International, LLC. Tel: (866) 774-2100 Technical: (866) 649-2710 Web Site: [www.PacinternationalLLc.com](http://www.PacinternationalLLc.com)**

**©2023 PAC International, LLC. All Rights Reserved. • (866) 774-2100 RSIC® is a registered Trade Mark**

# RSIC-SI-1 ULTRA SOUND ISOLATION CLIP



## Drywall Furring Channel:

- **Minimum Requirements:** 25 gauge, hemmed edge detail required on all 25 gauge furring channel. Meets or exceeds SSMA requirements.
- **Depth:** 7/8 inch
- **Width Bottom:** 2-1/2 inch wide minimum.
- **Width Top:** 1-1/4 inch wide

Splice drywall furring channel (hat track) with 6 inch overlap in mid span (between two clips) secure with 18 ga tie wire, or two 7/16" framing screws.

## Fasteners:

- **RSIC-SI-1 ULTRA Spring to Wood:** #8 x 1 inch minimum size coarse thread screw.
- **RSIC-SI-1 ULTRA Spring to Steel:** # 8 x 1/2 inch minimum size fine thread screw.
- **DO NOT** fasten Resilient Sound Isolation Clips (RSIC-SI-1 ULTRA Spring) to framing members with nails. Use only approved screws.

## Resilient Sound Isolation Clip (RSIC-SI-1 ULTRA Spring)

- **Maximum Spacing:** 48 inches on center
- **Design Load at 3/4" deflection from preset height**
- **Red = 40 Lbs**
- **Green = 30 Lbs**
- **Blue = 20 Lbs**
- **White = 10 Lbs**
- **Yellow = 5 Lbs**

## RSIC-SI-1 ULTRA Spring Dimensions:

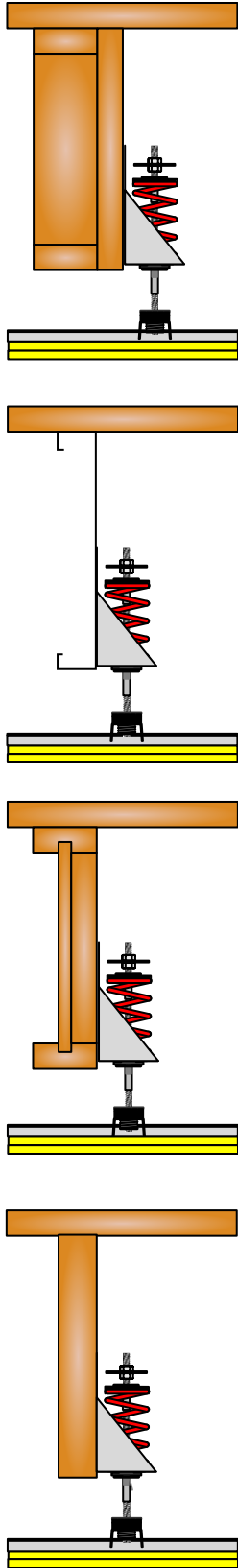
- RSIC-SI-1 ULTRA Spring clip Installed height 8"
- RSIC-SI-1 ULTRA Spring clip 1-1/4" Deep
- RSIC-SI-1 ULTRA Spring clip 3" Wide

## Average Labor Rates:

- **RSIC-SI-1 ULTRA Spring:** 40 clips per man hour
- **Drywall Furring Channel:** 550LF per man hour

Labor rates provided to PAC International, Inc by an independent contracting firm.

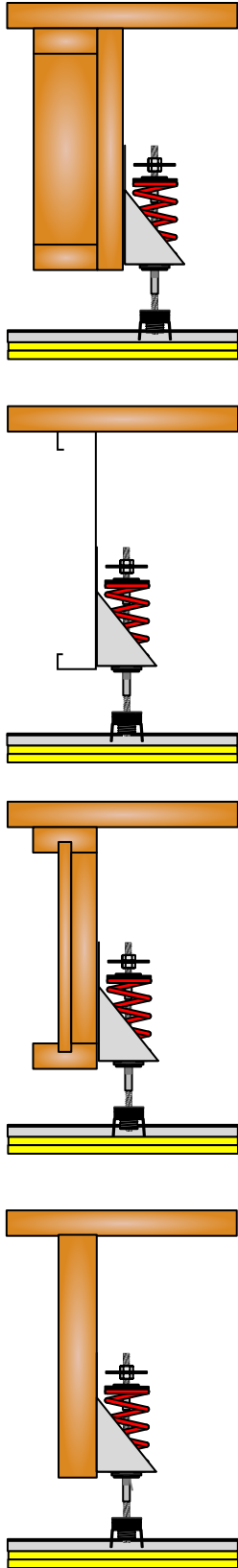
# RSIC-SI-1 ULTRA SOUND ISOLATION CLIP



## Ceilings:

- Resilient Sound Isolation Clips (RSIC-SI-1 ULTRA Spring) maximum spacing 24" x 48" on center .
- Layout the RSIC-SI-1 ULTRA Spring clips according to general guidelines represented in this installation manual.
- Any additional or non standard room dimensions need to be addressed by a professional engineer.
- Carefully remove RSIC-SI-1 ULTRA Spring pre-assembled, and pre-calibrated clips from packaging.
- Be cautious to not rotate the RSIC-1 clips separate from the Upper bracket. This may change the factory calibration of RSIC-SI-1 ULTRA Spring .
- Verify the correct quantity of each RSIC-SI-1 ULTRA Spring isolator (weight / color) is included in the shipment.
- Layout the RSIC-SI-1 ULTRA Spring clips out on the floor (reflecting the ceiling above) Ensure there are no additional items required to complete the installation, IE: Additional blocking to support the RSIC-SI-1 ULTRA Spring clips, or additional clips to support the drywall furring channel.
- Red 40 Lb clips are for the field
- Blue 20 Lb clips are for the field, edge.
- White 10 Lb clips are for edge, corner, and or infill where additional support is needed
- Yellow 5 Lb clips for the edge, corner.
- Fasten the Resilient Sound Isolation Clip (RSIC-SI-1 ULTRA Spring) to the structure with fasteners approved for a minimum pull-out and sheer of 100 lbs. Allowing for the predetermined 3/4" deflection after the gypsum board has been installed.
- Using a laser level, or tape measure set the height for all of the RSIC-SI-1 ULTRA Spring brackets at the same height
- Allow up to 3/4" deflection after all gypsum board has been installed.
- Ensure RSIC-SI-1 ULTRA Spring is securely fastened to the structure with a minimum of 2 each #8 x 1.5" long screw for wood frame.
- Blocking may be required.
- At the perimeter, the distance between the wall and first support for the drywall shall be less than 8".
- Variances in the field may require additional adjustment to ensure a consistent system. (see field calibration guide)
- To field adjust the RSIC-SI-1 ULTRA Spring clip, rotate the RSIC-1 clip of the RSIC-SI-1 ULTRA clip clockwise to raise, or tighten the spring. In converse rotate the RSIC-1 clip of the RSIC-SI-1 ULTRA Spring clip counter clockwise to lower the RSIC-1 clip. Lowering the RSIC-1 clip will not loosen the spring. To adjust the spring itself you will need to hold the top Cup washer and turn the threaded rod from the top side.
- When attaching plywood or other hard surface materials to light gauge drywall furring channel use RSIC-Super Coarse screw

# RSIC-SI-1 ULTRA SOUND ISOLATION CLIP



## Ceilings:

- Snap the drywall furring channel (hat track) into the RSIC-1 section of the RSIC-SI-1 ULTRA Spring clips.
- Add strong back consisting of 2 pieces of drywall furring channel, on the top side of the standard drywall furring channel to assist in leveling the ceiling at or near the perimeter. The strong back shall be placed perpendicular to the main drywall furring channels
- Install the gypsum board to the drywall furring channel leaving a 1/8" to 1/4" gap around the perimeter of the entire ceiling.
- Caulk around the entire perimeter of the ceiling wall intersection.
- Use fire and smoke rated acoustical sealant where required.

## Calibration and Adjustment:

- To field adjust the RSIC-SI-1 ULTRA HOME SERIES clip, rotate the RSIC-1 clip of the RSIC-SI-1 ULTRA HOME SERIES clip clockwise to raise. In converse rotate the RSIC-1 clip of the RSIC-SI-1 ULTRA HOME SERIES clip counter clockwise to lower. Lowering the RSIC-1 clip will not loosen the spring. To adjust the spring itself you will need to hold the top Cup washer and turn the threaded rod from the top side.
- The Pre-Calibration of the RSIC-SI-1 ULTRA HOME SERIES clip is designed to deflect 3/4" from its pre-loaded (pre-set) position after all layers of gypsum board has been installed.

## General Information:

- Resilient Sound Isolation Clip Spring Isolator (RSIC-SI-1 ULTRA Spring , furring channel (hat track) and gypsum board shall not carry heavy loads such as Projectors, HVAC Ducting, Curtains, etc.
- Splice furring channel (hat track) with 6 inch overlap in mid span, secure with 18 ga. tie wire or with two framing screws (7/16")
- Seal all potential air leaks with non-hardening acoustical caulking to achieve best noise control results. Use fire rated sealant where required.
- When attaching the RSIC-SI-1 ULTRA Spring clips to a steel Joist the minimum allowable thickness is 20 ga. (0.030).
- When attaching plywood or other hard surface materials to 25 Gauge drywall furring channel use RSIC-Super Coarse screw

## Fire Test Information:

[WWW.PAC-INTL.COM](http://WWW.PAC-INTL.COM)

Check UL Fire Resistance Directory File # R16638

Check UL's web pages. [www.ul.com/database](http://www.ul.com/database)

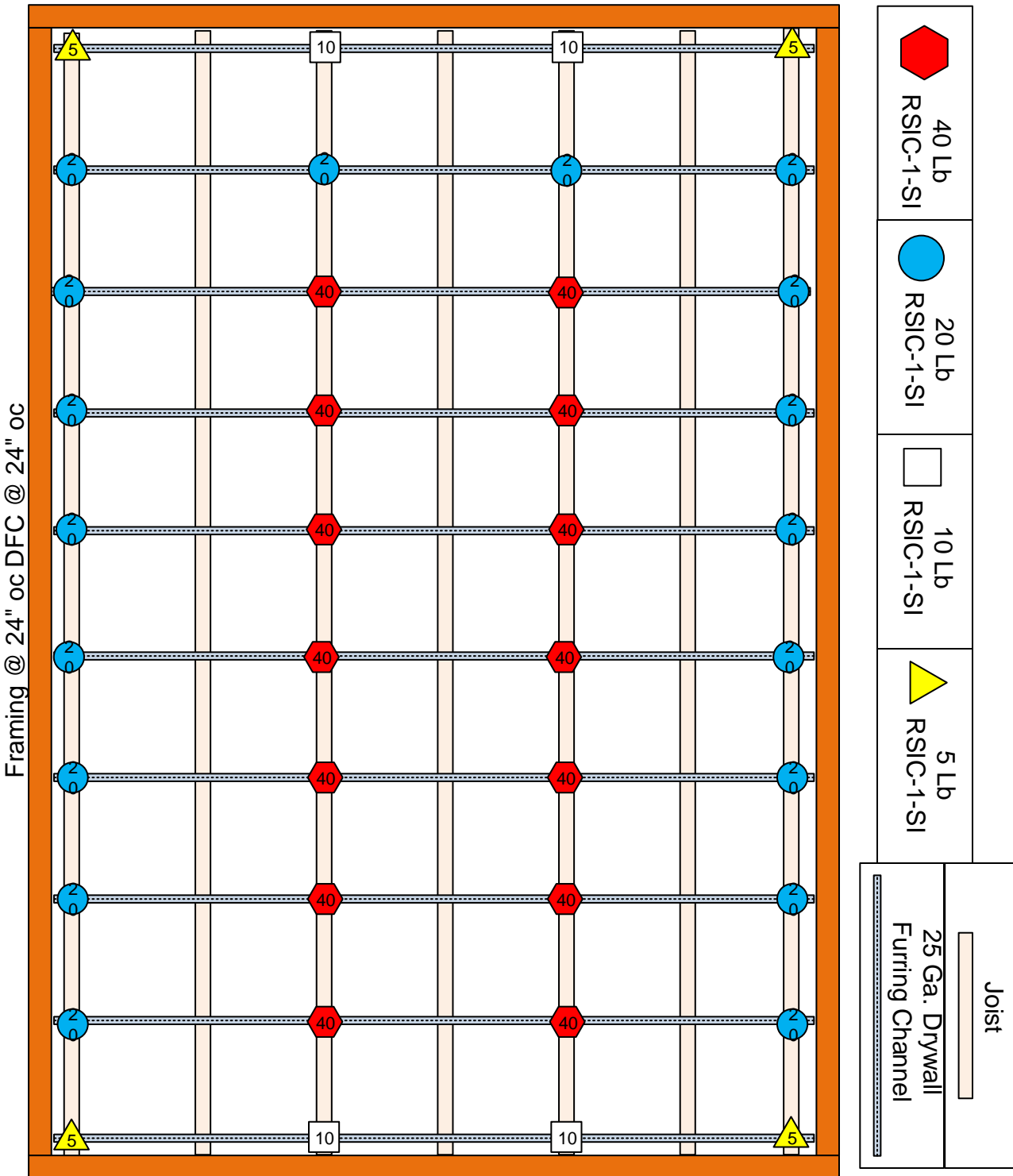
Contact UL (877) UL- HELPS

PAC International, LLC. Tel: (866) 774-2100 Technical: (866) 649-2710 Web Site: [www.PacinternationalLLc.com](http://www.PacinternationalLLc.com)

©2023 PAC International, LLC. All Rights Reserved. • (866) 774-2100 RSIC® is a registered Trade Mark

# RSIC-SI-1 ULTRA SOUND ISOLATION CLIP

## APPLICATION RECOMMENDATIONS FOR CEILINGS WOOD OR STEEL FRAMING

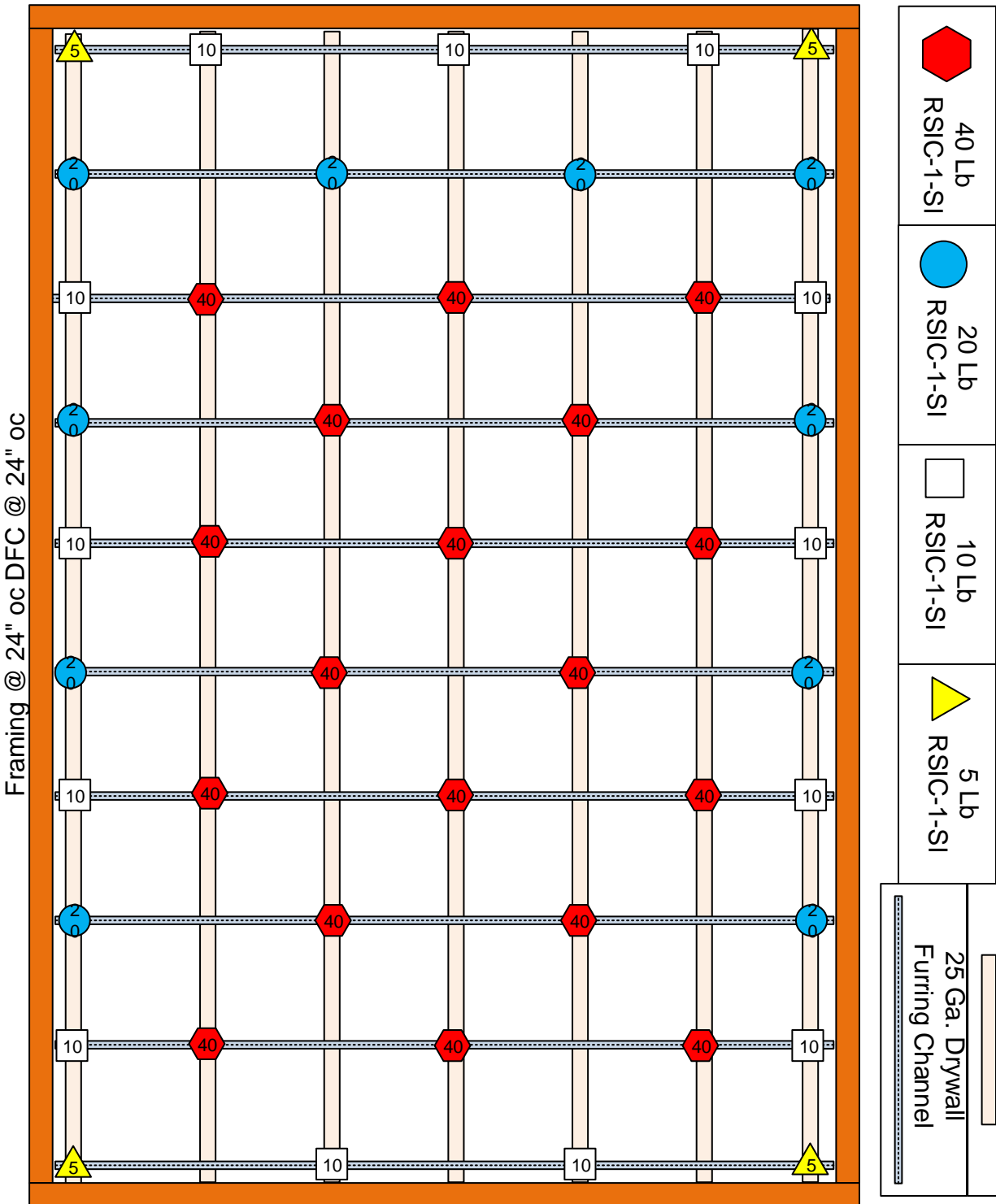


PAC International, LLC. Tel: (866) 774-2100 Technical: (866) 649-2710 Web Site: [www.PacinternationalLLc.com](http://www.PacinternationalLLc.com)

©2023 PAC International, LLC. All Rights Reserved. • (866) 774-2100 RSIC® is a registered Trade Mark

# RSIC-SI-1 ULTRA SOUND ISOLATION CLIP

## APPLICATION RECOMMENDATIONS FOR CEILINGS WOOD OR STEEL FRAMING OPTIONAL LAYOUT

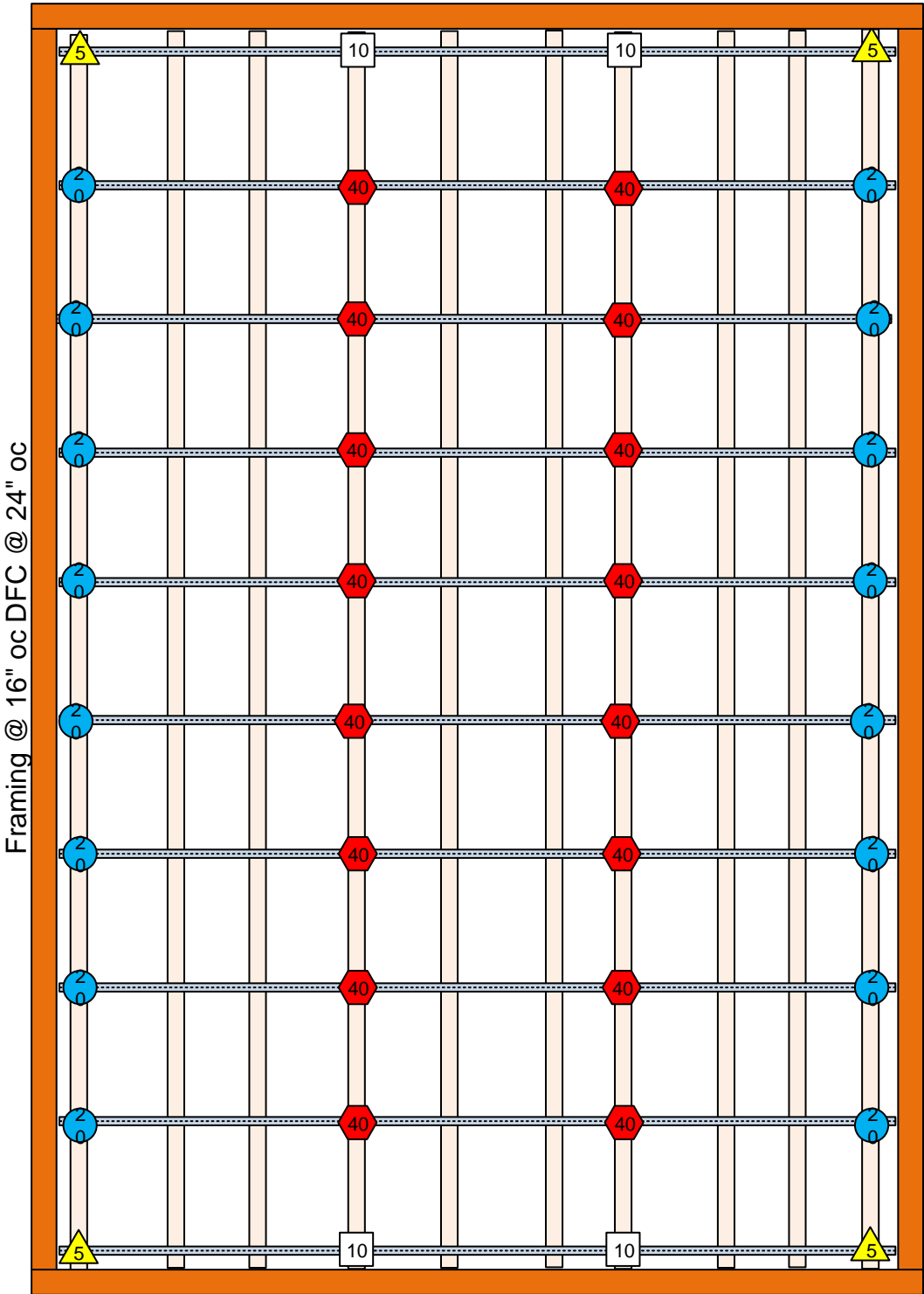




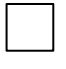

PAC International, LLC. Tel: (866) 774-2100 Technical: (866) 649-2710 Web Site: [www.PacinternationalLLc.com](http://www.PacinternationalLLc.com)

©2023 PAC International, LLC. All Rights Reserved. • (866) 774-2100 RSIC® is a registered Trade Mark

# RSIC-SI-1 ULTRA SOUND ISOLATION CLIP

## APPLICATION RECOMMENDATIONS FOR CEILINGS WOOD OR STEEL FRAMING



|   |                    |
|---|--------------------|
|    | 40 Lb<br>RSIC-1-SI |
|    | 20 Lb<br>RSIC-1-SI |
|    | 10 Lb<br>RSIC-1-SI |
|  | 5 Lb<br>RSIC-1-SI  |

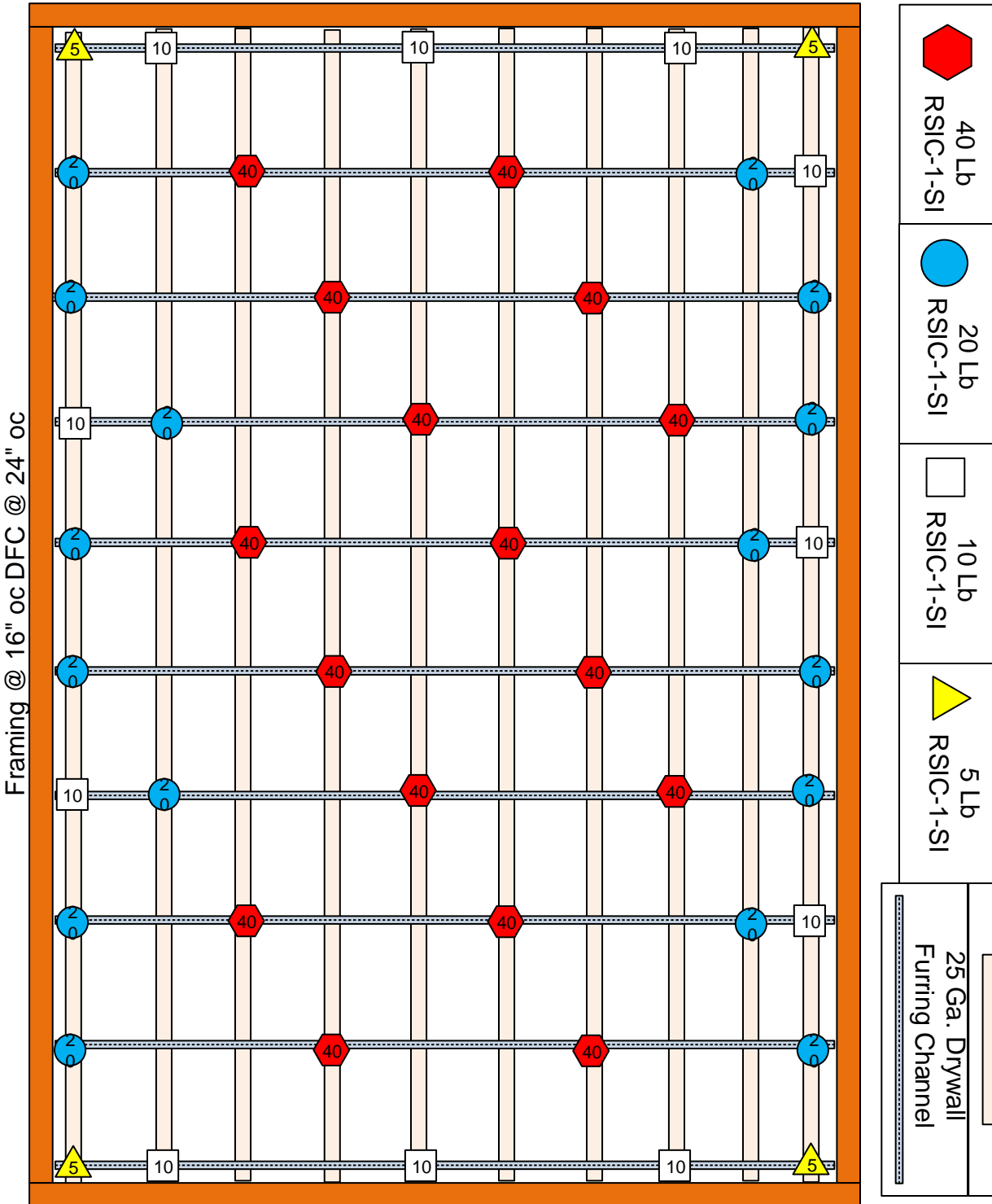
|                                   |  |
|-----------------------------------|--|
| Joist                             |  |
| 25 Ga. Drywall<br>Furring Channel |  |

PAC International, LLC. Tel: (866) 774-2100 Technical: (866) 649-2710 Web Site: [www.PacinternationalLLc.com](http://www.PacinternationalLLc.com)

©2023 PAC International, LLC. All Rights Reserved. • (866) 774-2100 RSIC® is a registered Trade Mark

# RSIC-SI-1 ULTRA SOUND ISOLATION CLIP

## APPLICATION RECOMMENDATIONS FOR CEILINGS WOOD OR STEEL FRAMING OPTIONAL LAYOUT



PAC International, LLC. Tel: (866) 774-2100 Technical: (866) 649-2710 Web Site: [www.PacinternationalLLc.com](http://www.PacinternationalLLc.com)

©2023 PAC International, LLC. All Rights Reserved. • (866) 774-2100 RSIC® is a registered Trade Mark



# RSIC-SI-1 ULTRA SOUND ISOLATION CLIP



## Members of the International Code Council

### **WARRANTY DISCLAIMER AND LIABILITY LIMITATION LANGUAGE**

#### **NO EXPRESS OR IMPLIED WARRANTIES**

THERE IS NO WARRANTY, REPRESENTATION OR CONDITION OF ANY KIND; AND ANY WARRANTY, EXPRESS OR IMPLIED, IS EXCLUDED AND DISCLAIMED, INCLUDING THE IMPLIED WARRANTIES OF MERCHANTABILITY AND OF FITNESS FOR A PARTICULAR PURPOSE. Some states do not allow limitations on implied warranties, so the above limitation may not apply to you.

#### **LIABILITY LIMITED TO RETURN OF PURCHASE PRICE**

IT IS AGREED THAT SELLER'S LIABILITY AND PURCHASER'S SOLE REMEDY, WHETHER IN CONTRACT, UNDER ANY WARRANTY, IN TORT (INCLUDING NEGLIGENCE), IN STRICT LIABILITY OR OTHERWISE, SHALL NOT EXCEED THE RETURN OF THE AMOUNT OF THE PURCHASE PRICE PAID BY PURCHASER, AND UNDER NO CIRCUMSTANCES SHALL SELLER BE LIABLE FOR ANY SPECIAL, INCIDENTAL OR CONSEQUENTIAL DAMAGES, INCLUDING, BUT NOT LIMITED TO, PERSONAL INJURY, PROPERTY DAMAGE, DAMAGE TO OR LOSS OF EQUIPMENT, LOST PROFITS OR REVENUE, COSTS OF RENTING REPLACEMENTS AND OTHER ADDITIONAL EXPENSES, EVEN IF SELLER HAS BEEN ADVISED OF THE POSSIBILITY OF SUCH DAMAGES. THE PRICE STATED FOR THE EQUIPMENT IS A CONSIDERATION IN LIMITING SELLER'S LIABILITY AND PURCHASER'S REMEDY. Some states do not allow the exclusion or limitation of incidental or consequential damages, so the above limitation or exclusion may not apply to you.

#### **SELLER NOT LIABLE FOR PURCHASER'S NEGLIGENCE**

SELLER WILL NOT BE LIABLE FOR ANY DAMAGES, LOSSES OR EXPENSES AS A RESULT OF PURCHASER'S NEGLIGENCE, WHETHER DEEMED ACTIVE OR PASSIVE AND WHETHER OR NOT ANY SUCH NEGLIGENCE IS THE SOLE CAUSE OF ANY SUCH DAMAGE, LOSS OR EXPENSE.

#### **MODEL FOR DEMONSTRATION PURPOSES ONLY**

THE MODEL OR SAMPLE SHOWN BY SELLER TO BUYER IS USED FOR DEMONSTRATION PURPOSES ONLY. THERE IS NO WARRANTY THAT THE GOODS AS DELIVERED SHALL CONFORM TO THE MODEL OR SAMPLE, AND CONFORMITY OF THE GOODS TO THE MODEL OR SAMPLE IS NOT PART OF THE BASIS OF THE BARGAIN BETWEEN SELLER AND BUYER.

#### **NO WARRANTY OR COMPLIANCE WITH SAFETY CODE OR REGULATION**

SELLER DOES NOT WARRANT THAT ANY OF THE GOODS SOLD WILL MEET OR COMPLY WITH THE REQUIREMENTS OF ANY SAFETY CODE, BUILDING OR DWELLING CODE, OR REGULATION OF ANY STATE, MUNICIPALITY OR OTHER JURISDICTION.

#### **NEVADA LAW APPLIES**

SELLER AND BUYER AGREE THAT ALL ASPECTS OF THIS TRANSACTION INCLUDING THE APPLICABLE STATUTE OF LIMITATIONS SHALL BE GOVERNED BY THE INTERNAL LAW OF THE STATE OF NEVADA, AND NOT THE LAWS OF CONFLICTS.

This warranty gives you specific legal rights, and you may also have other rights which vary from state to state

**PAC International, LLC. Tel: (866) 774-2100 Technical: (866) 649-2710 Web Site: [www.PacinternationalLLc.com](http://www.PacinternationalLLc.com)**

©2023 PAC International, LLC. All Rights Reserved. • (866) 774-2100 RSIC® is a registered Trade Mark



**World Leader in  
Noise Control  
Solutions**



**LEED Analysis  
RSIC-SI-1 Ultra**

**Recycled Content**

PAC International's RSIC-SI-1 does not contain significant recycled content.

**Fabrication Location**

The RSIC-SI-1 is manufactured in Canby, OR 97013

**Material Source**

The extraction points for the materials in these products cannot be verified. Assume they are outside the 500 mile radius.



World Leader in  
Noise Control  
Solutions



RSIC-1  
RSIC-SI-X  
RSIC-SI-X ADM  
RC-1 Boost  
PAC-RCB  
RSIC-SI-1 Ultra  
RSIC-SI-CRC EZ  
RSIC-SI-WHI  
RSIC-SI-FF  
RSIC-1 EXT04  
RISC-1.5 CRC  
RSIC-1 Low Profile  
RSIC-1 Edge  
RSIC-1 TTC  
RSIC-1 Retro  
RSIC-1 Backer  
RSIC-1 ADM  
RSIC-U  
RSIC-U-HD  
RSIC-WFI  
RSIC-FGP  
RSIC-DC04  
RSIC-DC04 HD/DD  
RSIC-DC04X2  
RSIC-DC04X2 HD/DD  
RSIC-V  
RSIC-2  
RSIC-2 Retro  
RSIC-CWB  
RSIC-CWB HD/DD  
RSIC-CWB HD/DD DC  
RSIC-Joist Isolator  
RSIC-GDS Kit  
RSIC-AMI  
RSIC-FS TV  
RSIC-Perimeter Tape  
RSIC Super Screw  
RSIC-Putty Pad  
RSIC-Multi Clip  
RSIC-FRC-HD  
PAC-IFB

## Safety Data Sheet

Article Statement

(PAC International, LLC Wall and Ceiling Isolation Products)

This document is provided for clarification of the Safety Data Sheets that you have requested for our product(s). OSHA Hazard Communication Standard requires a SDS for hazardous chemicals; however, the standard exempts all articles from the requirement. The explanation of an article is described per OSHA definition below.

*Pursuant to 29 CFR 1910.1200 (b) (6) (v) and (c), the product described herein is an “article” or is otherwise excluded from OSHA regulations requiring that a Material Safety Data Sheet be prepared for it.*

*An article defined: manufactured item other than a fluid or particle: (i) which is formed to a specific shape or design during manufacturing; (ii) which has an end use function (s) dependent in whole or in part upon its shape or design during end use; and (iii) which does not release, or other wise result in exposure to, a hazardous chemical under normal conditions of use.*

For technical information and additional resources covering these products please refer to PAC International published literature, e.g., data sheets, product drawings, and installation guidelines at [www.pac-intl.com](http://www.pac-intl.com)

As of the date of this document, the foregoing information is believed to be accurate and is provided in good faith to comply with applicable federal and state laws. However, no warranty or representation of law or fact, with respect to such information, is intended or given.



**World Leader in  
Noise Control  
Solutions**

RSIC-1  
RSIC-SI-X  
RSIC-SI-X ADM  
RC-1 Boost  
PAC-RCB  
RSIC-SI-1 Ultra  
RSIC-SI-CRC EZ  
RSIC-SI-WHI  
RSIC-SI-FF  
RSIC-1 EXT04  
RISC-1.5 CRC  
RSIC-1 Low Profile  
RSIC-1 Edge  
RSIC-1 TTC  
RSIC-1 Retro  
RSIC-1 Backer  
RSIC-1 ADM  
RSIC-U  
RSIC-U-HD  
RSIC-WFI  
RSIC-FGP  
RSIC-DC04  
RSIC-DC04 HD/DD  
RSIC-DC04X2  
RSIC-DC04X2 HD/DD  
RSIC-V  
RSIC-2  
RSIC-2 Retro  
RSIC-CWB  
RSIC-CWB HD/DD  
RSIC-CWB HD/DD DC  
RSIC-Joist Isolator  
RSIC-GDS Kit  
RSIC-AMI  
RSIC-FS TV  
RSIC-Perimeter Tape  
RSIC Super Screw  
RSIC-Putty Pad  
RSIC-Multi Clip  
RSIC-FRC-HD  
PAC-IFB

## **RSIC Product Warranty Disclaimer**

### **WARRANTY DISCLAIMER AND LIABILITY LIMITATION LANGUAGE**

#### **NO EXPRESS OR IMPLIED WARRANTIES**

THERE IS NO WARRANTY, REPRESENTATION OR CONDITION OF ANY KIND; AND ANY WARRANTY, EXPRESS OR IMPLIED, IS EXCLUDED AND DISCLAIMED, INCLUDING THE IMPLIED WARRANTIES OF MERCHANTABILITY AND OF FITNESS FOR A PARTICULAR PURPOSE. Some states do not allow limitations on implied warranties, so the above limitation may not apply to you.

#### **LIABILITY LIMITED TO RETURN OF PURCHASE PRICE**

IT IS AGREED THAT SELLER'S LIABILITY AND PURCHASER'S SOLE REMEDY, WHETHER IN CONTRACT, UNDER ANY WARRANTY, IN TORT (INCLUDING NEGLIGENCE), IN STRICT LIABILITY OR OTHERWISE, SHALL NOT EXCEED THE RETURN OF THE AMOUNT OF THE PURCHASE PRICE PAID BY PURCHASER, AND UNDER NO CIRCUMSTANCES SHALL SELLER BE LIABLE FOR ANY SPECIAL, INCIDENTAL OR CONSEQUENTIAL DAMAGES, INCLUDING, BUT NOT LIMITED TO, PERSONAL INJURY, PROPERTY DAMAGE, DAMAGE TO OR LOSS OF EQUIPMENT, LOST PROFITS OR REVENUE, COSTS OF RENTING REPLACEMENTS AND OTHER ADDITIONAL EXPENSES, EVEN IF SELLER HAS BEEN ADVISED OF THE POSSIBILITY OF SUCH DAMAGES. THE PRICE STATED FOR THE EQUIPMENT IS A CONSIDERATION IN LIMITING SELLER'S LIABILITY AND PURCHASER'S REMEDY. Some states do not allow the exclusion or limitation of incidental or consequential damages, so the above limitation or exclusion may not apply to you.

#### **SELLER NOT LIABLE FOR PURCHASER'S NEGLIGENCE**

SELLER WILL NOT BE LIABLE FOR ANY DAMAGES, LOSSES OR EXPENSES AS A RESULT OF PURCHASER'S NEGLIGENCE, WHETHER DEEMED ACTIVE OR PASSIVE AND WHETHER OR NOT ANY SUCH NEGLIGENCE IS THE SOLE CAUSE OF ANY SUCH DAMAGE, LOSS OR EXPENSE.

#### **MODEL FOR DEMONSTRATION PURPOSES ONLY**

THE MODEL OR SAMPLE SHOWN BY SELLER TO BUYER IS USED FOR DEMONSTRATION PURPOSES ONLY. THERE IS NO WARRANTY THAT THE GOODS AS DELIVERED SHALL CONFORM TO THE MODEL OR SAMPLE, AND CONFORMITY OF THE GOODS TO THE MODEL OR SAMPLE IS NOT PART OF THE BASIS OF THE BARGAIN BETWEEN SELLER AND BUYER.

#### **NO WARRANTY OR COMPLIANCE WITH SAFETY CODE OR REGULATION**

SELLER DOES NOT WARRANT THAT ANY OF THE GOODS SOLD WILL MEET OR COMPLY WITH THE REQUIREMENTS OF ANY SAFETY CODE, BUILDING OR DWELLING CODE, OR REGULATION OF ANY STATE, MUNICIPALITY OR OTHER JURISDICTION.

#### **NEVADA LAW APPLIES**

SELLER AND BUYER AGREE THAT ALL ASPECTS OF THIS TRANSACTION INCLUDING THE APPLICABLE STATUTE OF LIMITATIONS SHALL BE GOVERNED BY THE INTERNAL LAW OF THE STATE OR NEVADA, AND NOT THE LAWS OF CONFLICTS.

This warranty gives you specific legal rights, and you may also have other rights which vary from state to state