

RSIC-1-BACKER SOUND ISOLATION CLIP

RSIC-1-BACKER INSTALLATION GUIDE

RSIC-1 BACKER RSIC-1 BACKER HD/DD



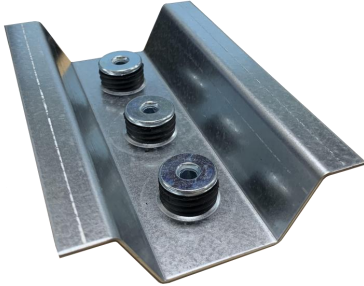
For use in with the RSIC-1 clip

PAC International, LLC. All Rights Reserved. • (866) 774-2100 • Fax (866) 649-2710

RSIC® is a registered Trade Mark

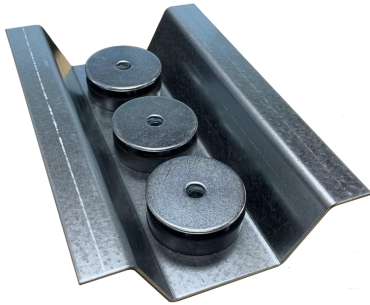
RSIC-1 BACKER SOUND ISOLATION CLIP

RSIC-1 BACKER INSTALLATION GUIDE



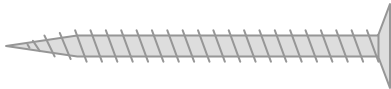
Resilient Sound Isolation Clip (RSIC-1 BACKER)

- Spacing: maximum 48 inches on center
- Maximum acoustical design load:
RSIC-1 BACKER 108 lbs
RSIC-1 BACKER HD/DD 216 lbs
- RSIC-1 BACKER is designed for use with the RSIC-1 clip to support heavy loads

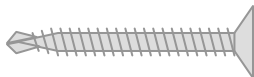


RSIC-1 BACKER dimensions:

- RSIC-1 BACKER clip 4" wide
- RSIC-1 BACKER clip 6" long
- RSIC-1 BACKER clip 1-5/8" deep



2-1/2" min



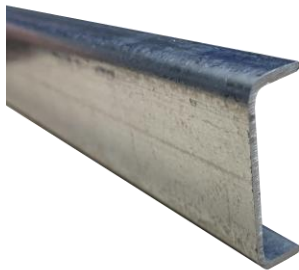
1-5/8" min



1/2" min

Fasteners:

- RSIC-1 BACKER to wood: #8 x 2-1/2 inch min.
- RSIC-1 BACKER HD/DD to wood: #10 or #12 x 2-1/2 inch min.
- RSIC-1 BACKER to Steel: # 8 x 1-5/8 inch min.
- RSIC-1 BACKER HD/DD to Steel: #10 or #12 x 1-5/8 inch min.
- Steel Track to RSIC-1 Backer: 1/2" min. pan head self drilling framing screw
- DO NOT fasten Resilient Sound Isolation Clips to framing members with nails. Use only approved screws.



Steel Track:

- Minimum requirements: 16 gauge Steel Track. Meets or exceeds SSMA min. requirements.
- Depth: 1-1/4 inch
- Width 6 inch wide.



Fire Test Information:

RSIC-1® Backer and RSIC-1 Backer HD for use wall designs of the U300, U400, V300, V400, and W400 wall series. Check our website for the latest updates of the fire testing approvals.

www.PACInternationalLLC.com

Check UL Fire Resistance Directory File # R16638

Check UL's web pages. **www.ul.com/database**

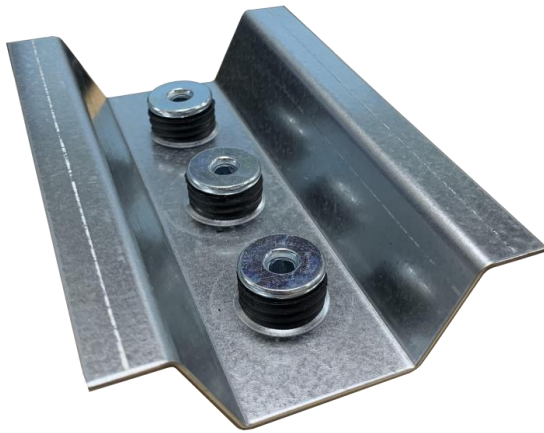
Contact UL (877) UL-HELPS

PAC International, LLC. All Rights Reserved. • (866) 774-2100 • Fax (866) 649-2710

RSIC® is a registered Trade Mark

RSIC-1 BACKER SOUND ISOLATION CLIP

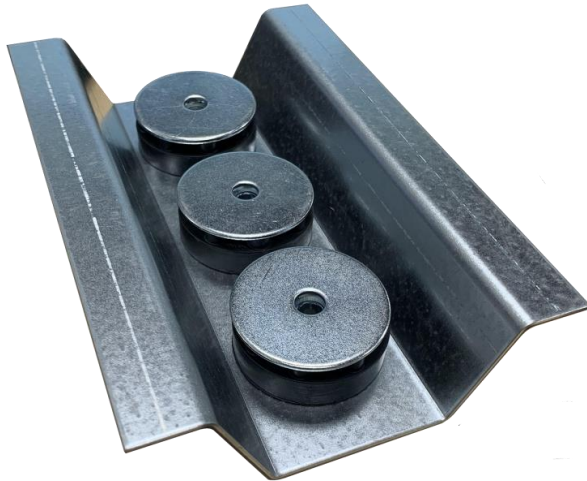
RSIC-1 BACKER INSTALLATION GUIDE



RSIC-1 BACKER

108 Lb per isolator max load

RSIC-1 BACKER Clip fastens to the wall framing adding support to the RSIC-1 clip wall system for supporting heavy loads.



RSIC-1 BACKER HD/DD

216 Lbs per isolator max load

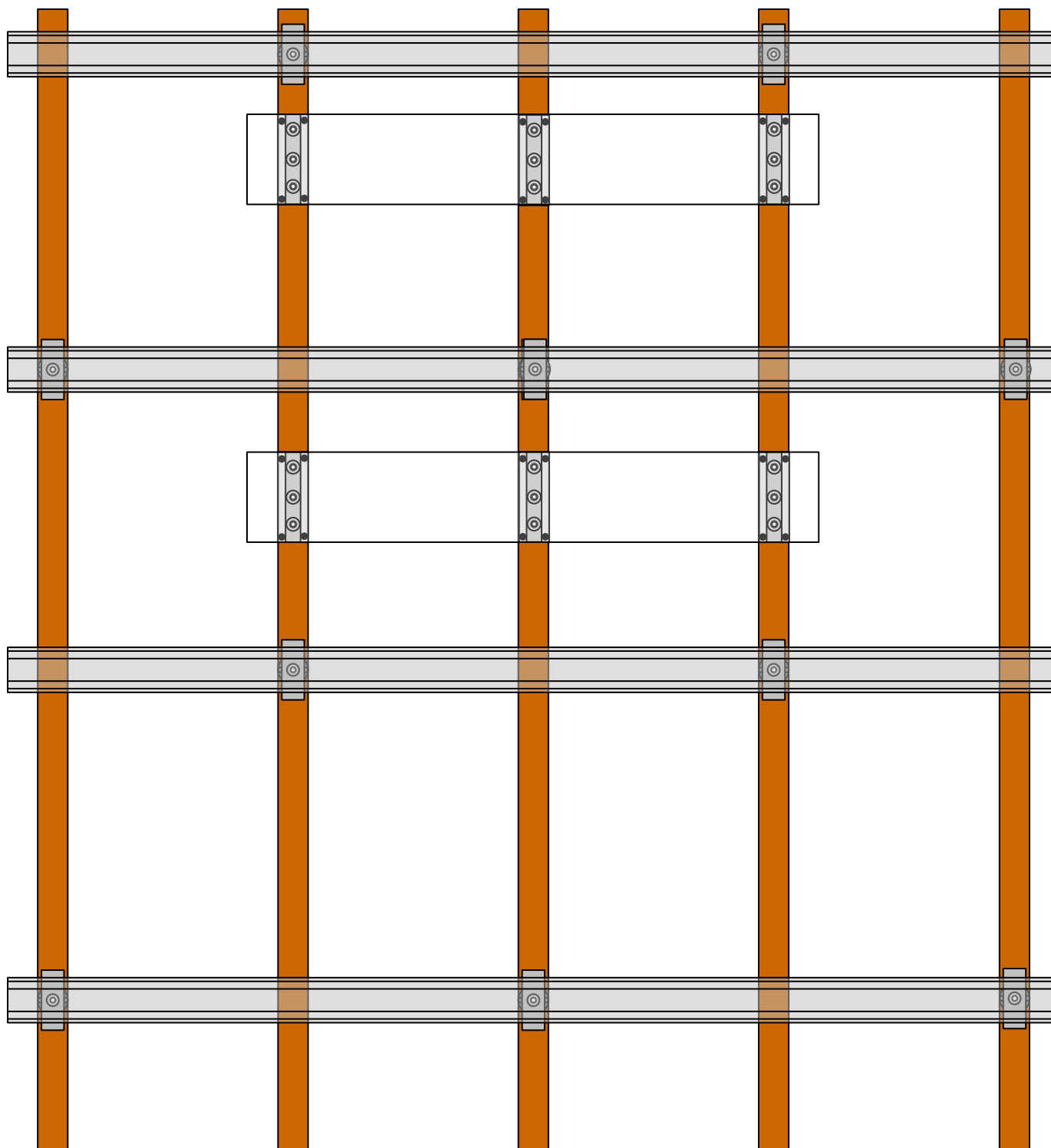
RSIC-1 BACKER HD/DD Clip fastens to the wall framing adding support to the RSIC-1 clip wall system for supporting heavy loads.

Walls:

- Resilient Sound Isolation Clip (RSIC-1 BACKER) shall be on every stud
- Spacing not to be greater than 48 inches on center.
- Locate the areas where the additional support will be needed in the wall system. Make a note on the plans referencing the location of each RSIC-1 BACKER and the steel track for mounting the additional items to the wall after the gypsum board is installed.
- Fasten the Resilient Sound Isolation Clip (RSIC-1 BACKER) to the framing using a fastener ensuring all of the RSIC-1 BACKER clips are in the same horizontal plane
- Fasten the steel track to the RSIC-1 BACKER using 4 ea framing screws per RSIC-1 BACKER.

RSIC-1 BACKER SOUND ISOLATION CLIP

RSIC-1 BACKER INSTALLATION GUIDE



PAC International, LLC. All Rights Reserved. • (866) 774-2100 • Fax (866) 649-2710

RSIC® is a registered Trade Mark

RSIC-1 BACKER SOUND ISOLATION CLIP

RSIC-1 BACKER INSTALLATION GUIDE

