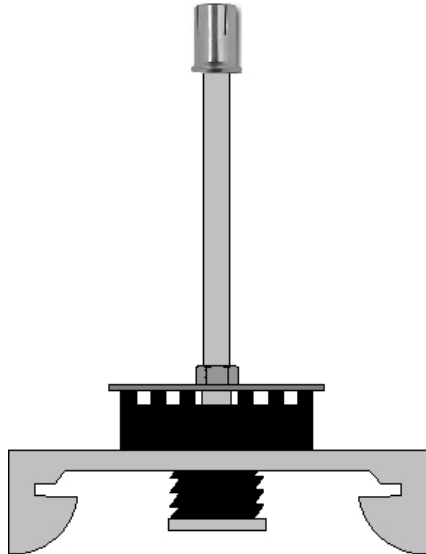




PAC PRO SERIES

RSIC-1 ADM mini Drop in Anchor



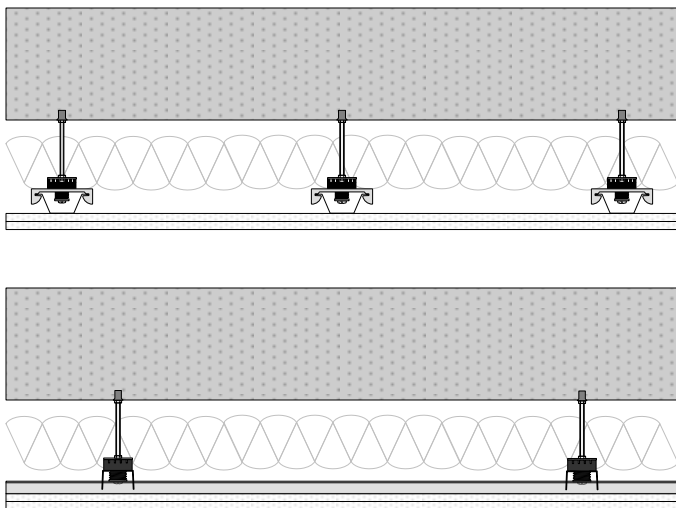
The **RSIC-1-ADM mini Drop in Anchor** clip designed for use with Concrete ceilings where noise control is required. The RSIC-1-ADM mini Drop in Anchor isolator is a labor saving adjustable mount ceilings. Drill a hole in the Concrete, Insert the mini drop in anchor, Set with setting tool and thread in the RSIC-1 ADM. To adjust the height, spin the isolator for a level ceiling. With an Acoustical design load rating of 36 lbs per isolator, the RSIC-1-ADM mini Drop in Anchor clip can support up to two layers of 5/8" gypsum board when spaced at 24" x 48" oc., and 3 layers when spaced at 16" x 48" oc. The RSIC-1-ADM mini Drop in Anchor clip attaches directly to the bottom of the framing or concrete decoupling the gypsum board from the structure stopping STC and IIC vibrations from entering the space below.

RSIC-1 ADM mini Drop in Anchor, the Low Cost, High Performance, Noise control Solution

Steel
Condo
Commercial

Apartment
Retail
Conference Rooms

Recording Studio
Home Theater
Commercial theater



RSIC-1-ADM mini Drop in Anchor specifications:	
Acoustical design load:	36 Lbs
Total deflection	3 mm
Double deflection	Yes (1.5 mm)
Made with Recycled content	Yes
Cryo low VOC treated	Yes
Adjustable	Yes
Cavity min	2-5/8"
Cavity Max	Up to 12"
Adjustment limit	Threaded Rod
Use on Ceilings	Yes
Use on walls	No
New Construction	Yes
Retro Fit	Yes
Assembled in USA	Yes