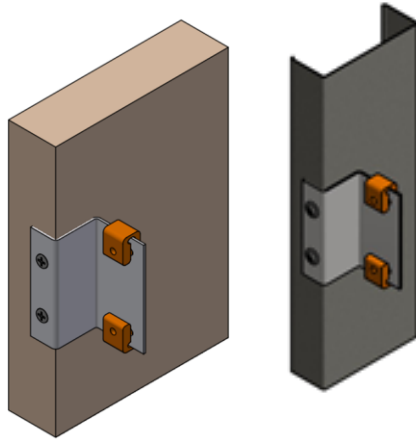




PAC RCB Backer



The **PAC-RCB** designed for use with all resilient channel wall systems were support for heavy loads like cabinets, bookshelves, headboards, shelving, etc. is required. The PAC-RCB isolates these heavy items that typically have to be directly mounted to the framing. The PAC-RCB stops the noise and vibration that typically would be allowed to transfer from room to room through the structure when those heavy loads are mounted directly to the wall framing. The direct mount short circuits the walls acoustical performance.

The RC-1 Boost isolator wraps around the screw edge of PAC-RCB backer. The RC-1 Boost is screwed to the framing using the PAC International supplied RC-1 Boost Screw. No substitutions allowed. The RC-Boost isolator decouples the backer mount from the structure stopping noise and vibrations from entering the adjacent space through the cabinet mounts.

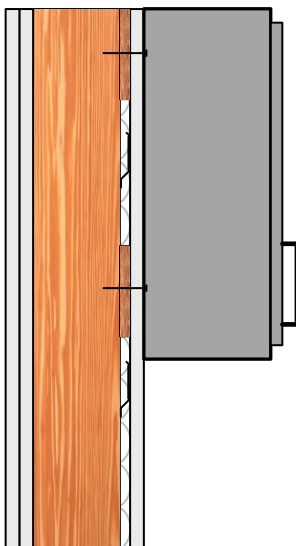
RCB, A Low Cost, High Performance, Noise control Solution

STC 46
M1131.01C

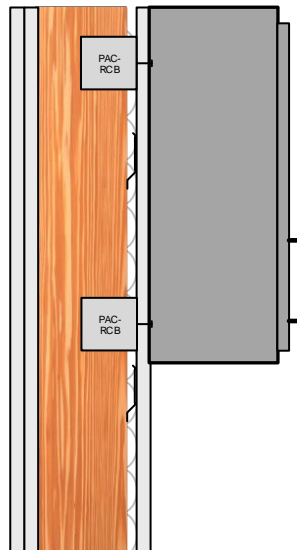
STC 54
M1131.01D

Wood - Steel
Apartment
Commercial
Conference Rooms

Condo
Recording Studio
Home Theater
Commercial theater



Base Wall + Cabinets
& Plywood Backing



Base Wall + Cabinets
& PAC-RCB

RCB specifications:	
Acoustical design load:	Up to 25 Lbs each
Combined ADL:	50 Lbs (set)
Total deflection	1 mm
Double deflection	Yes (1 mm)
Low VOC	Yes
Adjustable	No
Cavity min	3/4"
Cavity Max	3/4"
Adjustment limit	N/A
Use on walls	Yes
New Construction	Yes
Assembled In USA	Yes